

# **Some Little Known Gila Valley Dayhikes**

**By Don Lancaster  
and Synergetics**

**<http://www.tinaja.com/gilahike.asp>**

# Let's skip the obvious ...

---

- **Frey Mesa Falls.**
  - **Mount Graham Observatory.**
  - **Roper Lake State Park.**
  - **Bonita Creek.**
  - **San Carlos Lake.**
  - **Discovery Park.**
  - **Gila Box Riparian Area.**
  - **The Rug Road**
  - **Riggs Lake.**
  - **Cedar Springs.**
-

**... and these "been there, done that's" ...**

---

- **Cluff Ponds.**
  - **Hot Well Dunes.**
  - **Flying "W" Picnic Area.**
  - **Arivapia Canyon.**
  - **Mills Collection.**
  - **Graham County Historical Society.**
  - **Backcountry Byway.**
  - **Marijilda Picnic Area.**
  - **Apple Annies.**
  - **Leopard Frog Renarium.**
-

**... and start off with ...**

---

# **THE UFO FISH FILLETS OF TAYLOR TERRACE**

---









**... must Include the SIXTY MILES (!) of ...**

---

**MOUNTAIN STREAM FED  
PREHISTORIC "HANGING" CANALS**

---























**... and the spectacular cliffs of ...**

---

## **FISHERMAN'S POINT**

---









**... our very own slot canyon at ...**

---

## **EL CAPITAN CANYON**

---











**... hard to reach & physically challenging ...**

---

## **SAN CARLOS FALLS**

---











... the **FIVE LOOPS** and tunnels of the ...

---

## **MORENCI SOUTHERN RAILROAD**

---











**... spectacular but rarely visited ...**

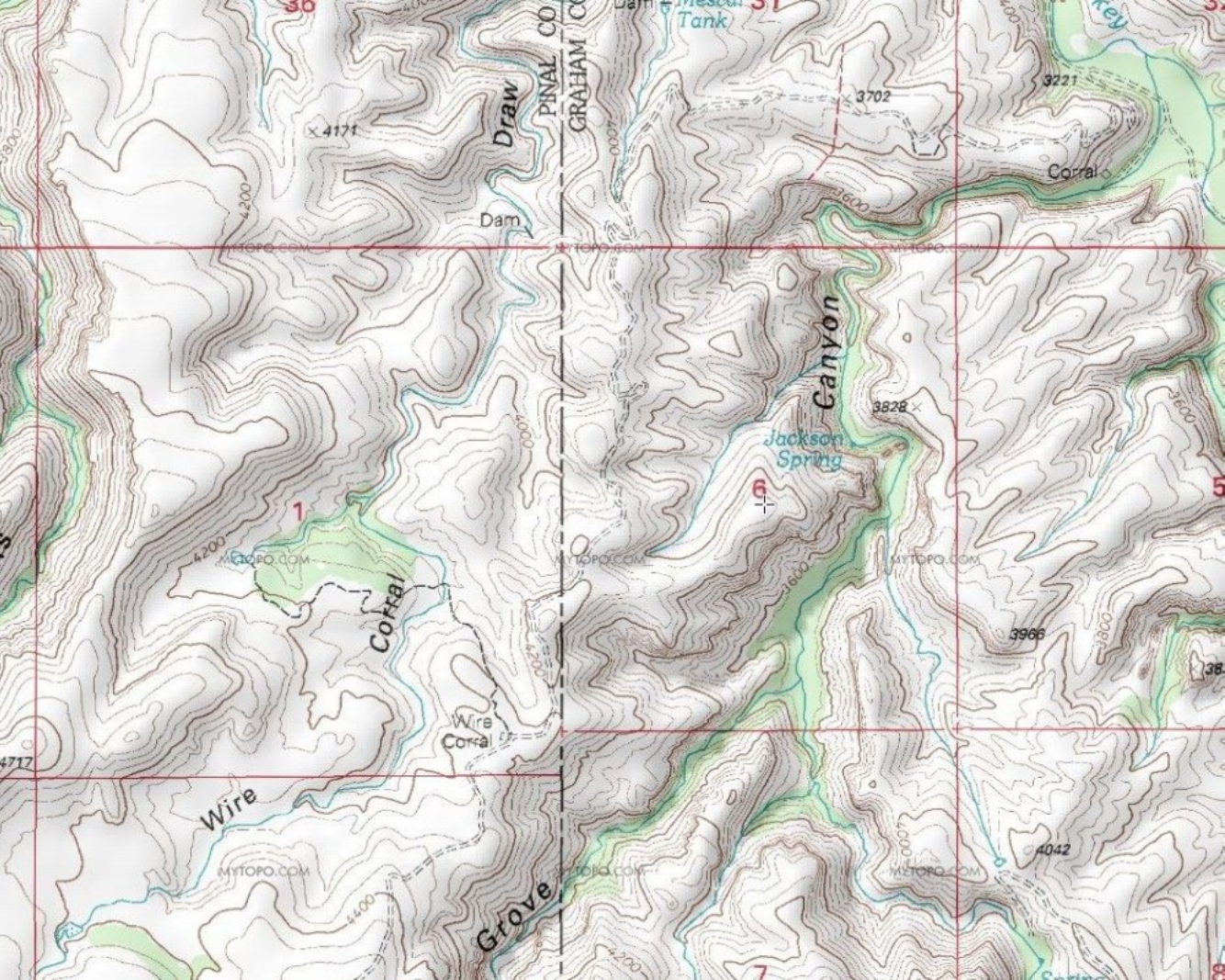
---

## **OAK GROVE CANYON**

---









**... unique but extremely remote ...**

---

## **HANNAH HOT SPRING**

---







**... the strange ghost machinery of ...**

---

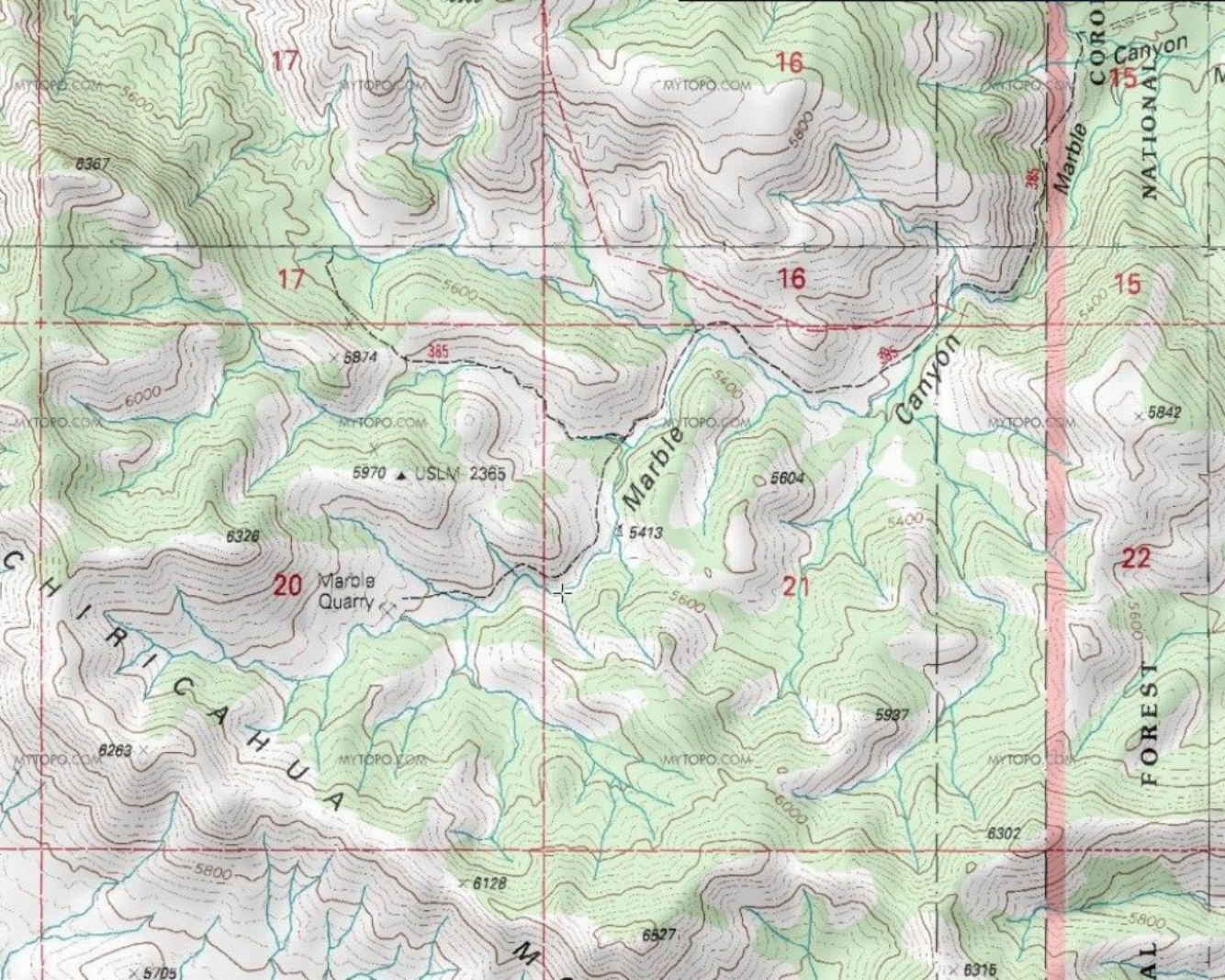
# **THE EMIGRANT CANYON MARBLE QUARRY**

---











**... TENS OF THOUSANDS of fields used for ...**

---

# **PREHISTORIC CULTIVATION IN THE SAFFORD GRIDS**

---





ANTHROPOLOGICAL PAPERS OF  
THE UNIVERSITY OF ARIZONA  
NUMBER 70

# **The Safford Valley Grids**

## **Prehistoric Cultivation in the Southern Arizona Desert**



**William E. Doolittle and James A. Neely**  
**Editors**

THE UNIVERSITY OF ARIZONA PRESS  
TUCSON  
2004

... Turn of century travel solutions from the ...

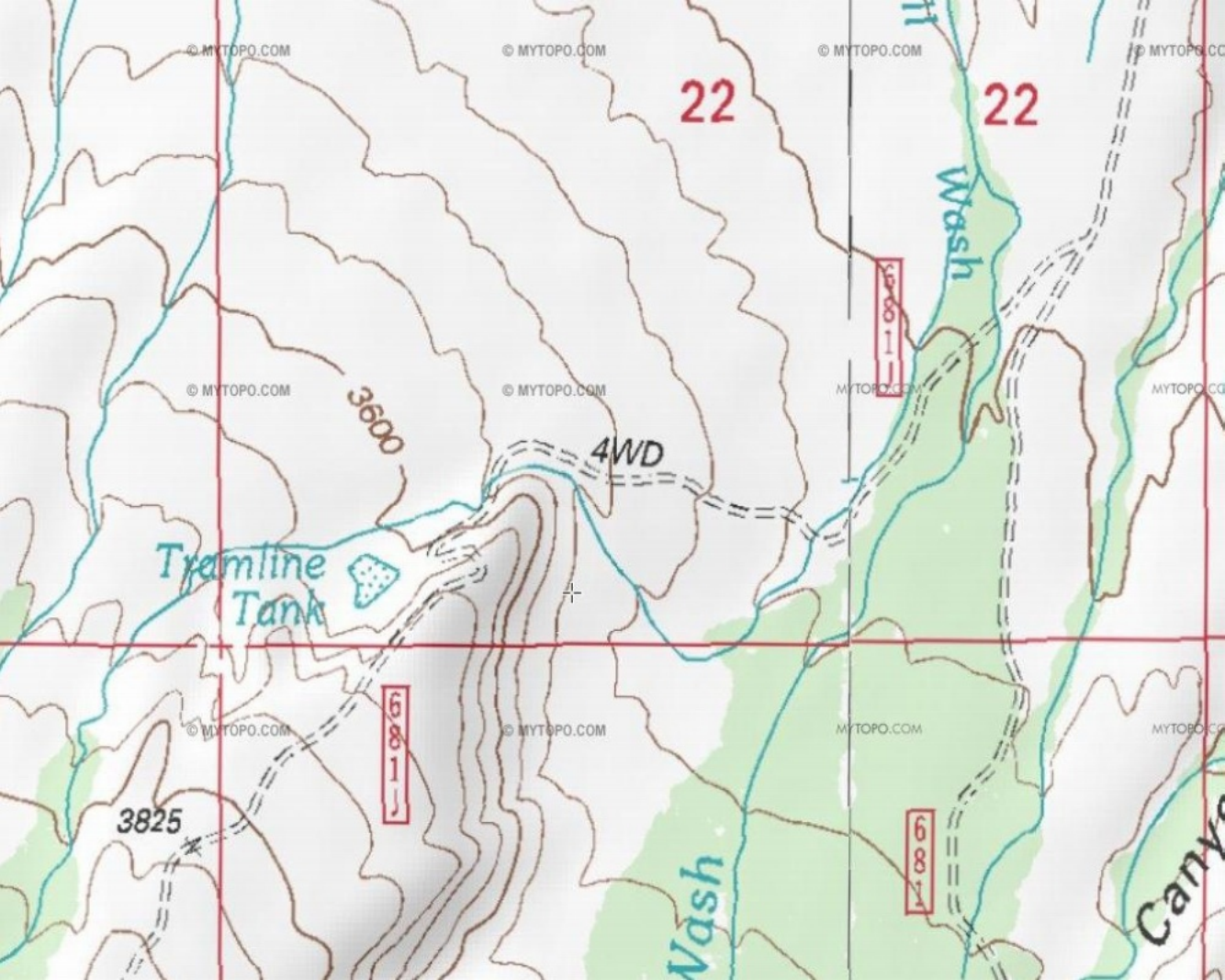
---

## **MONTEZ AND WEECH TOLL ROADS**

---







© MYTOPO.COM

© MYTOPO.COM

© MYTOPO.COM

© MYTOPO.COM

22

22

© MYTOPO.COM

3600

© MYTOPO.COM

© MYTOPO.COM

© MYTOPO.COM

4WD

Tramline  
Tank

© MYTOPO.COM

© MYTOPO.COM

© MYTOPO.COM

© MYTOPO.COM

3825

681

681

Canyon



**... and finally this favorite of mine ...**

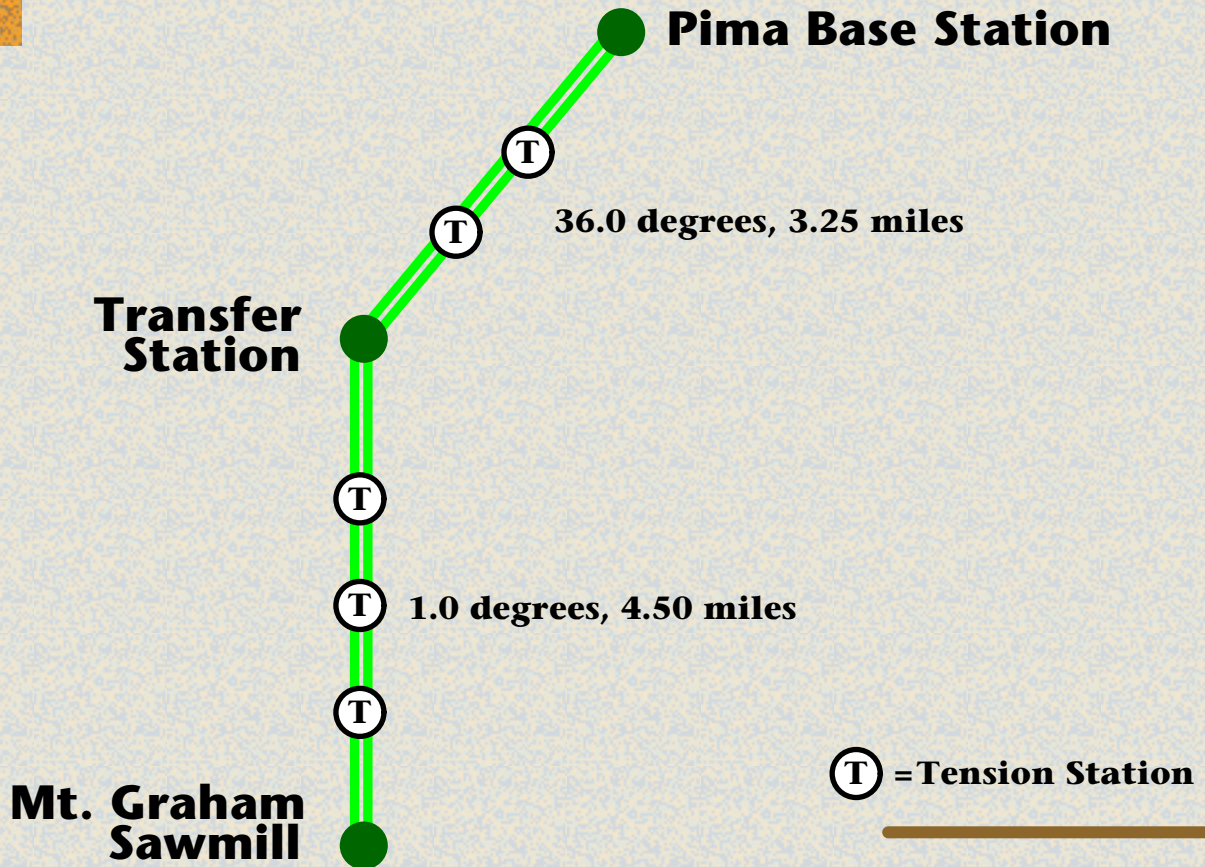
---

# **THE MOUNT GRAHAM AERIAL TRAMWAY**

---

**7-3/4 miles, 2 reaches, 14 regions...**

---





# UP first, then drops ONE VERTICAL MILE...

---

**9200 feet**

**8700 feet**

**Alabam Point**

**Max span: 2600 feet  
with an 800 foot drop**

**3300 feet**

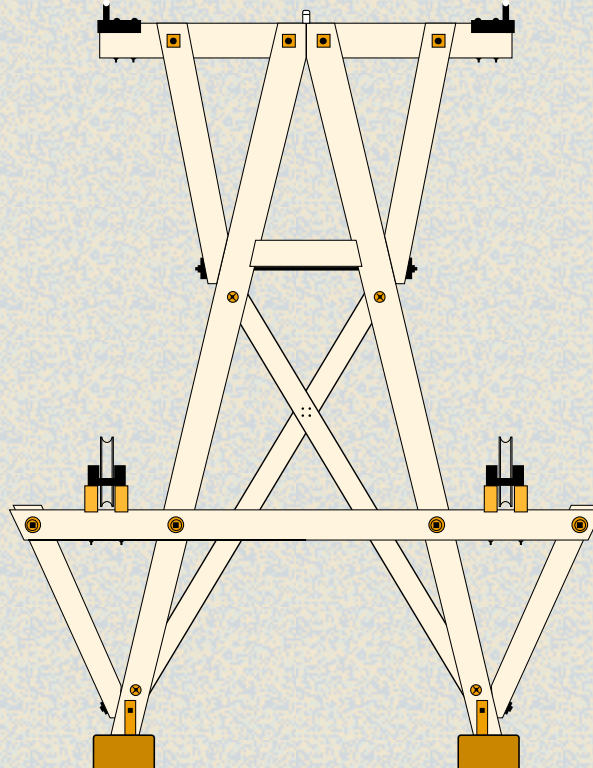
**( 4X vertical scale )**

---



# Typical Wood Tower was 18 feet high...

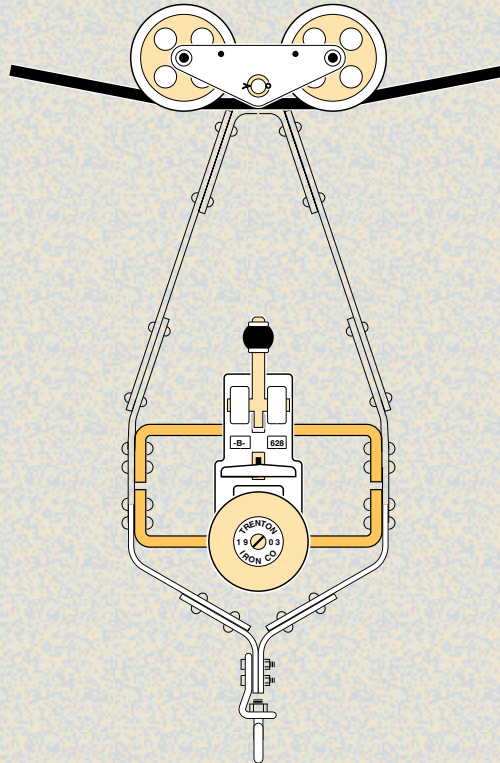
---





# Carriers were used in pairs...

---





# Don Lancaster's Guru's Lair

## Some Gila Valley Day Hikes

[auctions](#)[bargains](#)[books](#)[contact](#)[email](#)[home](#)[library](#)[map](#)[?new?](#)[rss](#)

<a href="#">1-15</a>	<a href="#">16-30</a>	<a href="#">31-45</a>	<a href="#">46-60</a>	<a href="#">61-75</a>
<a href="#">76-90</a>	<a href="#">91-105</a>	<a href="#">106-120</a>	<a href="#">121-135</a>	<a href="#">136-150</a>
<a href="#">151-165</a>	<a href="#">166-180</a>	<a href="#">181-195</a>	<a href="#">196-210</a>	<a href="#">211-225</a>
<a href="#">226-240</a>	<a href="#">241-255</a>	<a href="#">256-270</a>	<a href="#">271-285</a>	<a href="#">286-300</a>
<a href="#">301-315</a>	<a href="#">316-330</a>	<a href="#">new</a>		
		<a href="#">cnf</a>	<a href="#">blm</a>	<a href="#">avoid</a>

Over the years, I've managed to make at least one trip somewhere just about every week forever. Some for



# This has been an excerpt of...

---

<http://www.tinaja.com/glib/gilahike.pdf>

Presented by Don Lancaster and **Synergetics**, 3860  
West First Street, Box 809, Thatcher, Arizona, 85552.  
(928) 428-4073.

<mailto:don@tinaja.com>

More info on Gila Valley day hiking and prehistory  
can be found at

<http://www.tinaja.com/glib/tinsamp1.pdf>

**Copyright c 2011 and earlier by Don Lancaster and Synergetics.  
Linking usually welcome. All media, web, and ALL other rights  
fully reserved. Mirroring or reposting is expressly forbidden.**

---