



SOME BAJADA CANAL FIELD NOTES

Allen Canal	Bear Springs	Cluffnw Canal
Deadman Canal	Freeman Canal	Frye Complex
Golf Canal	Henry's Canal	Jernigan Canal
Lefthand Canal	Longview Area	Lower Frye
Minor Webster	Mud Springs	Reay Canal
Riggs Mesa	Robinson Canal	Sand Canal
Smith Canal	TB Ponding	Tranquility
Tripp Canal	Tugood Canal	Veech Canal

OTHER BAJADA HANGING CANAL PAPERS

JFA publication.	Author's JFA Preprint
Canal Menu Directory	Hanging Canal Images
Prehistoric Bajada Canals	USA Today Story
Lafayette College Story	Wikipedia Story
Grant County Paper	Glyphs Canal Paper
Third Party Papers	ARA Web Video
ARA .3GP Video	Downloadable Video
Latest & Older Updates	-----

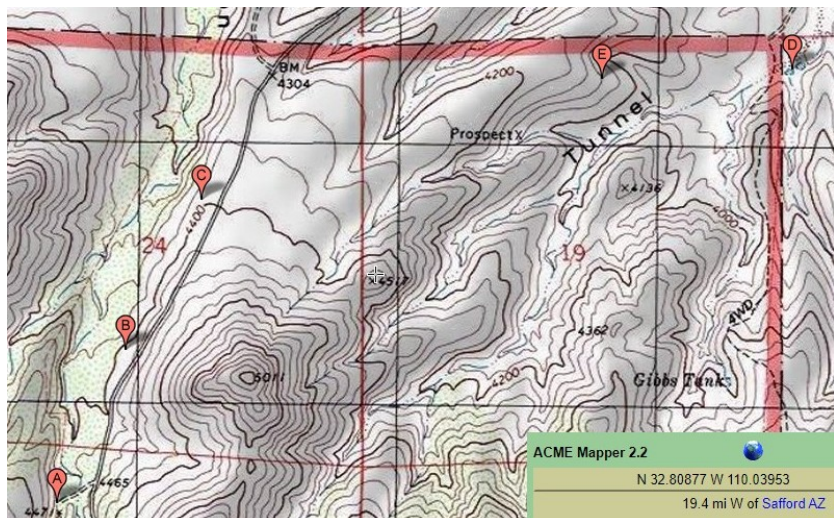
Tripp Bajada Canal Preliminary Field Notes

Don Lancaster
don@tinaja.com
 (928) 428-4073

Jim Neely
neely@utexas.edu
 (575) 686-0098

The Tripp Canal is the westernmost known of the [Mt Graham](#) bajada canals and gives strong credence to the canals nearly completely surrounding Mt Graham. The entire canal lies on [Coronado National Forest](#) property and would seem to be eminently suitable for their further study.

Only a mile long portion of the canal has been mapped and explored between [N 32.80615 W 110.04987](#) and [32.81134 W 110.04676](#). This is just west of the Tripp Canyon road one third of the way up the West Peak and is [Acme Mapper](#) obvious...



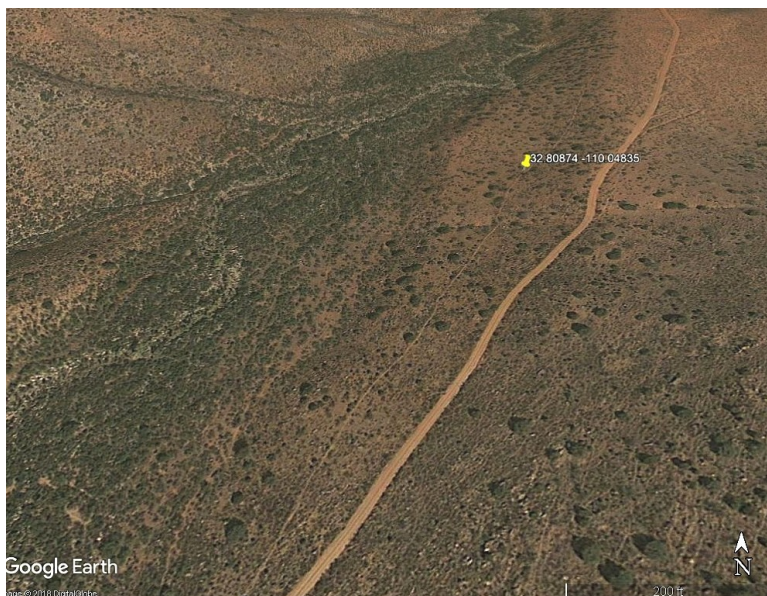
The rest of the canal remains unexplored. While an [Ockham's Razor](#) candidate would have its three mile length starting at a 4500 foot elevation near the windmill at [N 32.80084 W 110.05271](#) and possibly ending at the twin ponds in Tunnel Canyon that is found at [N 32.81584 W 110.02237](#). A hint at [N 32.81551 W 110.03023](#) may be an access trail for topo [Prospect X](#).

This routing would include a watershed crossing. But one lacking the pinch points and spectacular engineering of those in [Mud Springs](#) and possibly [Upper Frye](#). The explored portion seems clearly prehistoric and lacks any historical rework. It is small being typically only a foot across. The workmanship seems much lower than the more eastern canals. Possibly because of the extremely rocky terrain or weaker engineering skills well out of the main canal areas.





Here is the more obvious portion of the Tripp canal in [Google Earth](#)...



And here are some current interest points of the [Tripp Canal](#)

N 32.80084 W 110.05271 -	Proposed windmill start of canal.
N 32.80615 W 110.04987 -	Start of well defined canal portion.
N 32.81134 W 110.04676 -	Ending of well defined canal portion.
N 32.81551 W 110.03023 -	Location of very dim mid canal hint.
N 32.81584 W 110.02237 -	Twin ponds possible destination.

Some suggested future Tripp Canyon work includes....

- Verify windmill canal water source.
- Determine credible canal destination.
- Involve Coronado Forest participation.
- Evaluate canal age and purpose.
- Create a flyable drone lidar KML product.
- Rethink entire area water resources.
- Document exact canal route.
- Publish professionally.
- Update and improve the other field notes.