



[Click for KML](#)

## Veech Canal Preliminary Field Notes

**Don Lancaster** and **James A. Neely**

Synergetics, Box 809, Thatcher, AZ 85552  
copyright c2017 rev 12/17 All rights reserved

<http://www.tinaja.com>

[don@tinaja.com](mailto:don@tinaja.com) and [neelyja@utexas.edu](mailto:neelyja@utexas.edu)

(928) 428-4073 and (575) 686-0098

**R**ecent **Acme Mapper** evidence has now strongly supported the presence of the smaller but long sought after Veech Canal which still remains unvisited or field verified. This is likely the Southeasternmost significant canal in the entire **bajada hanging canals system** and apparently routes from a takein found at **N 32.64138 W 109.74348** to fields in the **N 32.64385 W 109.74215** area. The canal route is on **Coronado National Forest** lands in the P Ranch area. The length is approximately 300 meters and the elevations range from 3710 feet down to 3760 feet...



Access would be roughly a mile south in moderate to heavy brush off of a 4WD extension of the P Ranch road. Besides the Veech canal itself, there appear to be a group of linear rock alignments near **N 32.64275 W 109.74088**. While these do presently appear to be prehistoric, **CCC** constructs cannot yet be ruled out. CCC projects tend to be more drainage oriented.

While it seems too early to evaluate the actual construction, it is likely to be a moderate hanging section was followed by low energy flatter terrain construction. Non-obvious distribution segments might also be found in the apparent fields.

**Coronado National Forest** has expressed interest in doing additional work in this area, and a rancher apparently applied for a permit to dig out the ditch decades back. This work was never done. Area habitations are rumored but unconfirmed.

The P ranch area was extensively explored in attempts to track town persistent rumors of the above Veech Canal. Also observed was an apparently modern short deep vee canal segment at **N 32.61440 W 109.72780** and a possible flood control structure at **N 32.65379 W 109.71856**.

Some observed features of the Veech Canal include...

- N 32.64138 W 109.74348** Possible takein point.
- N 32.64250 W 109.74288** Possible hanging to flatland transition.
- N 32.64385 W 109.74215** Possible destination field area.
- N 32.64275 W 109.74088** Eastern linear alignments.
- N 32.61440 W 109.72780** Discounted likely historic short deep vee canal.
- N 32.65379 W 109.71856** Discounted likely historic flood control structure.

Further VeechCanal work might include...

- 1** — Field verify that this is in fact a prehistoric canal.
- 2** — Evaluate takein position and condition.
- 3** — Determine existence and length of hanging portion.
- 4** — Evaluate end use fields.
- 4** — Droning, videotaping, and more photos of the known explored portion.
- 5** — Evaluate eastern linear alignments for prehistoric potential.
- 6** — Coordinate further research with **Coronado National Forest**.
- 7** — Review previously discounted P Ranch canal locations.
- 8** — Seek input from local landowners and clan historians.



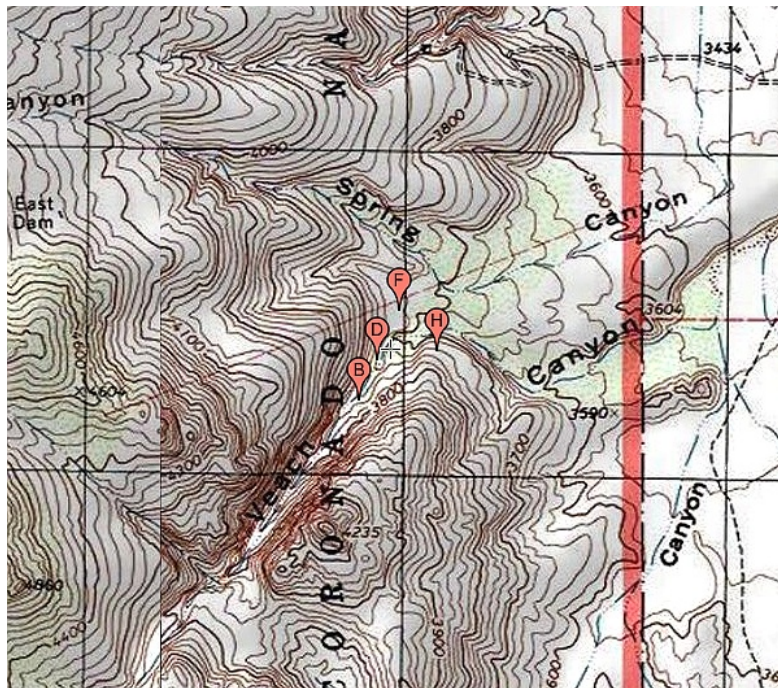
**VEECH4** – A tilted [Google Earth](#) view of the likely Veech Canal route. To date, these persistently rumored locations have not yet been field verified. The view is to the south from [N 32.64385 W 109.74215](#).



**VEECH5** – Linear alignments just east of the presumed Veech Canal locations. Field verification is still required to verify prehistoric, rather than [CCC](#) or natural origins. The view is to the east near [N 32.64250 W 109.74288](#).



Here is a topographic map of the Veech Canal...



You can click through on the above images to directly reach [Acme Mapper](#) at a higher resolution.

A hanging canal directory can be found [here](#) and its sourcecode [here](#).

This field note is associated with directory [1 VCN1- Veech Canal](#) and [64 PRM1 - P Ranch Mysteries](#).

This document can be found [here](#) and its sourcecode [here](#).

**More Hanging Canal Resources:** <http://www.tinaja.com/tinsamp1.shtml>  
**New Hanging Canal Developments:** <http://www.tinaja.com/whtnu17.shtml>

