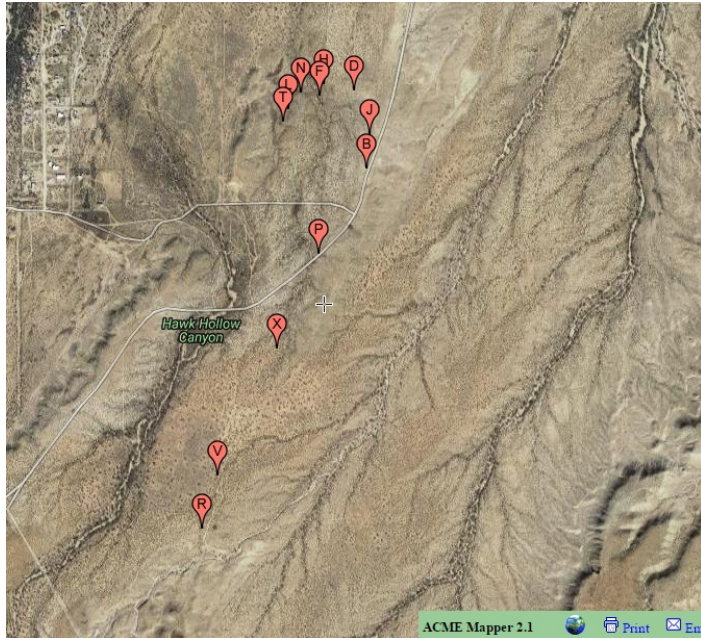


# Jernigan Canal Preliminary Field Notes

**Don Lancaster** and **James A. Neely**  
Synergetics, Box 809, Thatcher, AZ 85552  
copyright c2017 rev 12/17 All rights reserved  
<http://www.tinaja.com>  
[don@tinaja.com](mailto:don@tinaja.com) and [neelyja@utexas.edu](mailto:neelyja@utexas.edu)  
(928) 428-4073 and (575) 686-0098

The Jernigan **Prehistoric Hanging Bajada Canal** is a western branch of the **Mud Springs Canal**. Jernigan is somewhat over 2 kilometers in length and is primarily northward oriented. While only portions have been mapped, its hallmarks include exceptionally well defined end use fields, a related occupancy structure, four "U" turns", area artifacts, a counterflow example, and a short but steep French Drain segment.

There is also a possible aquaduct in the area at **32.83913 -109.81550**, but this could alternately be a historic dam-like structure. Ownership is primarily on **AZ State Lands**, and the canal is directly sourced by the **Mud Springs Canal**. The elevations begin at 3000 feet and the average canal slope is about 0.8 percent.



Access is primarily off Layton Road, Grandma Lane, and a pair of 4WD tracks. Here are some noteworthy Jernigan Canal features and locations...

- 32.82744 -109.82008** During a recent bloom, "dead flowers" clearly marked the canal routings in this area.
- 32.82763 -109.81954** Start of Jernigan Canal splits northward.
- 32.82763 -109.81954** "Small rocks" may partially define headgate.
- 32.82949 -109.81891** Reasonably traced area. Portions may split.
- 32.83387 -109.81647** Unknown routing, despite numerous trips.
- 32.83768 -109.81460** Vague routing seems barely credible.
- 32.83913 -109.81546** Enigmatic aquaduct or historic structure.
- 32.84013 -109.81275** Well defined area immediately adjacent to Layton Road and amazingly close and rather similarly elevated to Mud Springs Canal.
- 32.84281 -109.81329** Unknown routing, despite numerous trips.
- 32.84305 -109.81454** First of four "U-turns" to optimize terrain. Canal resumes easy tracibility.
- 32.84313 -109.81451** Two medium sized Mesquite trees mid channel.
- 32.84264 -109.81472** Second "U-Turn" counterflows wash crossing.
- 2.84275 -109.81547** Third "U-Turn" works its way around mesa edge.
- 32.84216 -109.81597** Significant hanging portion is eminently viewable.
- 32.84173 -109.81619** French Drain cascade is short but rather steep.
- 32.84173 -109.81619** Final "U-turn" delivers to destination fields.

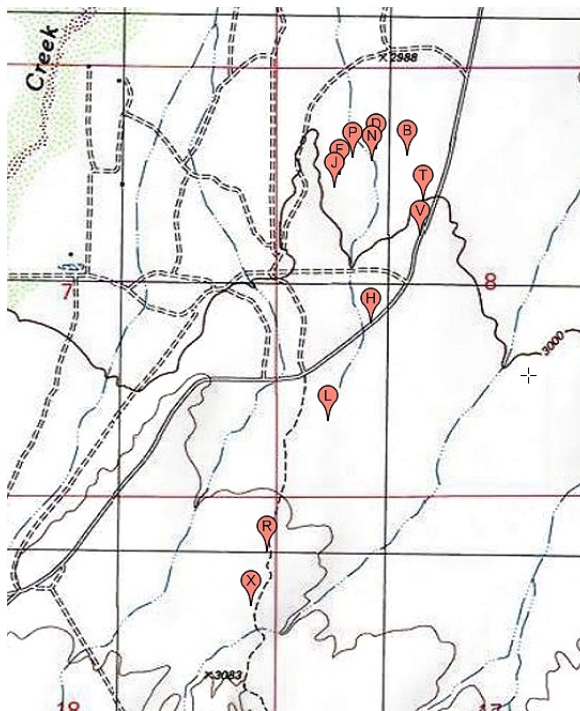
Further Jernigan Canal work might include...

- 1 — Resolve missing portions from **32.83069 -109.81815** to **32.83716 -109.81473**.
- 2 — Resolve missing portions from **32.84131 -109.81263** to **32.83716 -109.81473**..
- 3 — Integrate present canal studies with previous resources.
- 4 — Drone fly and videotape the entire route.
- 5 — Further research the headgate stones.
- 6 — Improve exact GPS locations.
- 7 — Provide additional photography.
- 8 — Better determine nature of **32.83913 -109.81546** "aqueduct".
- 9 — Continue use of awareness tours.



**JERN1** – Composite view shows projected destination fields in the foreground, a significant hanging canal portion mid image, and Webster Hill in the background. A short but steep French Drain is off-image to the right. This canal dramatically "U-turn" reverses itself four times to optimize terrain following. A "counterflow" segment is used to cross a wash. The view is to the east at [32.84234 -109.81704](#).

Here is a topographic map of the Jernigan Canal...



You can click through on the above images to directly reach [Acme Mapper](#) at a higher resolution.

A hanging canal directory can be found [here](#) and its sourcecode [here](#).

This field note is associated with directory [46. JEC1 - Jernigan Canal](#) and with [44. MJB1 - Mud Jernigan Branching Point](#) and [42. MSC1 - Mud Springs Canal](#).

This document can be found [here](#) and its sourcecode [here](#).

**More Hanging Canal Resources:** <http://www.tinaja.com/tinsamp1.shtml>  
**New Hanging Canal Developments:** <http://www.tinaja.com/whtnu17.shtml>

