

Some Golf Course Canal Preliminary Field Notes

Don Lancaster and **James A. Neely**
Synergetics, Box 809, Thatcher, AZ 85552
copyright c2018 rev 1/18 All rights reserved
<http://www.tinaja.com>
don@tinaja.com and neelyja@utexas.edu
(928) 428-4073 and (575) 686-0098

While only a small portion of the Golf Course **prehistoric bajada hanging canal system** is presently verified, recent evidence suggests that it has the potential of being a part of the longest and most significant found in the entire hanging canal grouping. The previously verified **Arizona State Lands** portion was a mere 0.6 miles or 1 kilometer long and had an elevation differential of 35 feet from 3149 feet to 3114 feet...



The earlier field verified portion began with a Southern limit that was set by a fence at **N 32.79796 W 109.78311**. A credible, but yet still unproven, tentative takein source might be the terminus of the **HS Canal** at **N 32.75774 W 109.81499**, possibly routed under a historic pipeline at **32.76693 -109.79449**. A remarkably similar pipeline overlays a similar hanging canal in the **Deadman Canal** area.

The projected Golf Course Canal is presumed to continue northerly past a partially known braiding near **N 32.77812 W 109.78992** and through the Riggs Canyon gap at **N 32.77985 W 109.78669** to **N 32.78197 W 109.78716**.

Here is what the projected extended Golf Course Canal might look like...



If this canal were to continue past an obvious habitation area, some more recent discoveries indicate likely northward extensions past the Tailwater1 Canal to end up terminating in the **Reay Canal**. For a total tentative possible channel full length of 10 or more miles or 16 kilometers. Not counting the **Upper Frye Construct** or its original sources!

Earlier discounted less likely Golf Course sources could include some tie in with the Roberston Canal at **N 32.80231 W 109.78958**, the Blue Ponds at **N 32.78869 W 109.76882**, or some involvement with four small artesian sources that can be found at **N 32.79593 W 109.78523**, or at **N 32.79768 W 109.78412**, **N 32.79954 W 109.78345**, and also at **N 32.80250 W 109.78098**. These artesian sources seem to have very little current water flow, but it is highly unlikely they would not have been prehistorically exploited at least in some manner.

Returning to the original exploration area: From the wash bottom at the fence, the Golf Course canal proceeds northerly, "climbing" out of the wash in a typical, well defined, and easily followed hanging route to the 4WD track at **N 32.79992 W 109.78020**. At this point, the canal swings suddenly eastward, initially on an obvious mesa top canal routing.

Some continuing portions of this routine seem untraceable, while other short segments are fairly easily followed, especially at **N 32.79934 W 109.77794** and at **N 32.79908 W 109.77707**. Canal size is "medium" being typically one meter wide and half a meter deep.

The known northeastern trace limit of the Golf Course Canal would seem to be at **N 32.79884 W 109.77599**, owing to extensive modern development beyond.

A possible unverified destination might have been a field that underlies the Southernmost duck pond at **N 32.79944 W 109.77318**. Alternately, the entire Daley Estates area around **N 32.80251 W 109.76683** is unusually level and could easily have provided a wide ranging group of multiple fields. Areas remaining undeveloped here clearly have a rich cultural prehistory, including a major ruin, numerous potsherds, and even sherd "spoil piles" from pothunting or field camps.

A short segment of another canal of indeterminate age and purpose can be found in the area at **N 32.80652 W 109.77828**. It has something of a "tailwater" look about it and it is not yet clear what its relationship might have been to the **Golf Course** canal. Even further north lies the more recently discovered **Reay Canal**. The later is endangered and terminates in a modern housing development.

Some observed features of the Golf Course Canal include...

- N 32.75772 W 109.81496** Possible Frye Creek diversion.
- N 32.75772 W 109.81496** End of known HS Canal.
- N 32.76693 W -109.79449** Possibly overlain by historic pipeline.
- N 32.77732 W 109.78801** Riggs braided channel hints.
- N 32.78055 W 109.78683** Still unstudied potential Riggs Canyon segment.
- N 32.79796 W 109.78311** Southern fence limit of Golf Course Canal.
- N 32.79920 W 109.78114** Midway "up" the hanging canal portion.
- N 32.79980 W 109.77989** Shift between hanging and mesa top reaches.
- N 32.79934 W 109.77794** Short and well defined channel cut.
- N 32.79884 W 109.77599** Second short channel cut.
- N 32.79884 W 109.77599** Limit apparently set by historical rework.
- N 32.79948 W 109.77322** Duck pond possible end use destination.
- N 32.80617 W 109.77637** Possibly related "Tailwater1" canal.
- N 32.82220 W 109.77292** Possibly related **Reay Canal**.

Further Golf Course Canal work might include...

- 1** — Prove or disprove the Upper Frye Watershed Crossing.
- 2** — Find a feasible routing from HS Canal to the pipeline.
- 3** — Strengthen evidence of the historic pipeline overlay.
- 4** — Carefully map the Riggs Area braidings.
- 5** — Resolve the 'missing" Riggs Canyon Gap portions..
- 6** — Determine relationship with "tailwater" canal segment.
- 7** — Determine relationship between Golf, Robinson, and Reay.
- 8** — Droning, videotaping, and more photos of the known portions.
- 9** — Plot and map entire canal route.
- 10** — Evaluate potential and use of artesian sources.
- 11** — Relate cultural resources to canal systems.



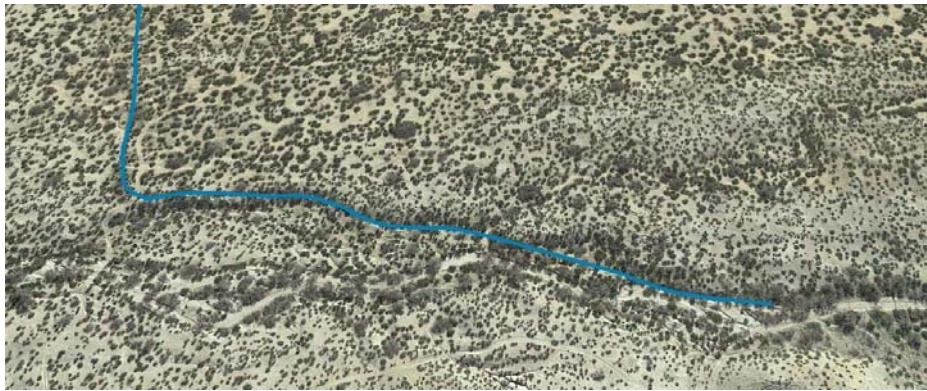
GC1 – Much of this portion of the Golf Course Canal is indistinct and hard to find, with the exception of a pair of modest and reasonably interpreted cuts. This is the western one shown west at **32.79934 W 109.77794**.



GC2 – A second fairly well defined Golf Course Canal cut. Edge spoil banks are approximately half a meter high. View is west at **N 32.79884 W 109.77599**.

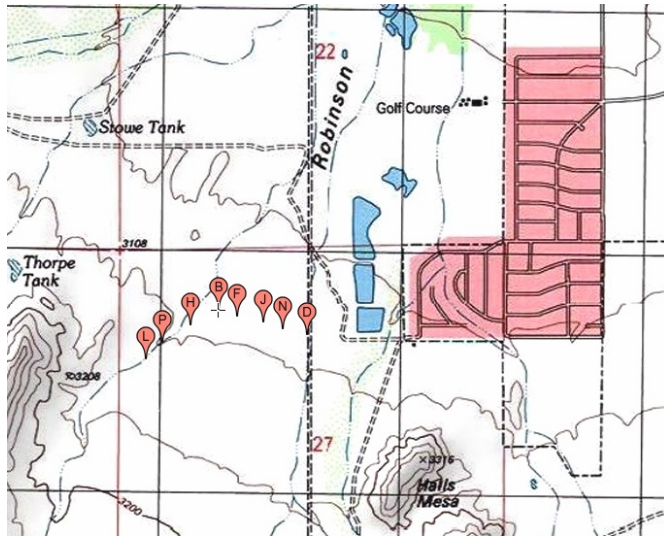


GOLF3 – A 4WD track defines the point where the Golf Course canal shifts from its northerly hanging mode to its easterly mesa top mode. Viewed northwest from **N 32.79994 W 109.78019**.

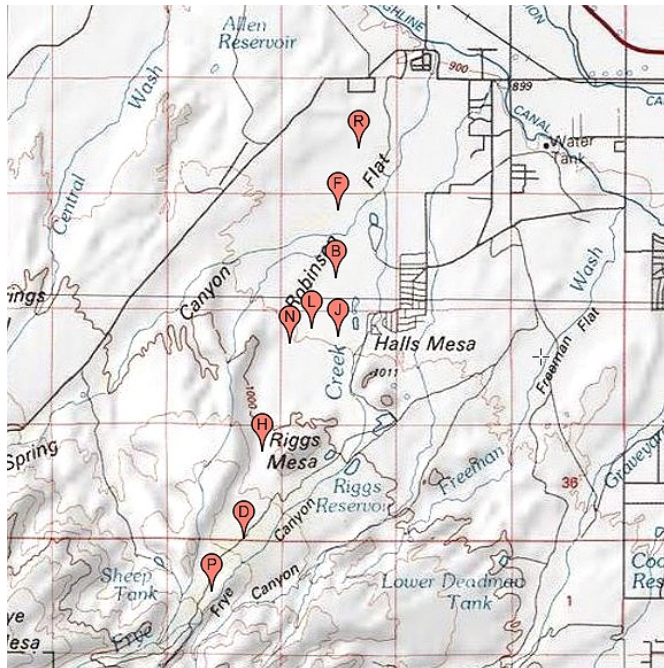


GOLF4 – This tilted image shows the hanging route of the Golf Course Canal where it "climbs" out of a wash. A sudden easterly turn marks reaching the flat mesa top where its conventional canal construction resumes. The view is to the East from **32.79898 -109.78152**.

Here is a topographic map of the earlier verified Golf Course discoveries...



And here is a topographic map of the partially projected but unproven full Golf Course extent. This does not include the **Upper Frye Complex** predelivery phase...



You can click through on the above images to directly reach [Acme Mapper](#) at a higher resolution.

A hanging canal directory can be found [here](#) and its sourcecode [here](#).

This field note is associated with directory **35. GCC1 - Golf Course Canal** and **86. LFP1 - Lower Frye Pipeline** and **34. RGC1 - Riggs Mesa Area Braided Channels** and **80. REY1 - Reay Canal** and **36. TAP1 - Twin Artesian Ponds** and **31. HSC1 - HS Canal** and **30. FPA1 - Lower Frye Mesa Ponding** and **87 TLW1 - The Tailwater Canal** and **20. FMC1 - Frye Mesa Complex**.

This document can be found [here](#) and its sourcecode [here](#).

More Hanging Canal Resources: <http://www.tinaja.com/tinsamp1.shtml>
New Hanging Canal Developments: <http://www.tinaja.com/whtnu17.shtml>

