



[Click for KML](#)

Deadman Bajada Hanging Canal Preliminary Field Notes

Don Lancaster and **James A. Neely**

Synergetics, Box 809, Thatcher, AZ 85552
copyright c2017 pub 10/17 All rights reserved

<http://www.tinaja.com>

don@tinaja.com and neelyja@utexas.edu

(928) 428-4073 and (575) 686-0098

The canal system in Deadman Canyon is a curious mix of apparently **prehistoric channel** originals which still flow to this day that were combined with major yet partially abandoned historic rework...

STILL FLOWING BAJADA CANALS

Artesia#1	Artesia#2
Bear Flat?	Bigler
Deadman	Goat
Ledford	Marijilda
Roper Lake?	

Routing begins with a single concrete taken from perennial Deadman Creek that is found at **32.73883 -109.81156**, climbs "up" over a buried pipeline replaced initial hanging segment presumed immediately east of the Deadman 4WD track at **32.74242 -109.80886** to a mesa top historic distribution box that can be found at **2.74447 -109.80736**. At this point, the water was historically diverted down to Frye Creek via a presently broken and non functioning transite pipe system.

The original and presumed hanging portion of the Deadman Canal has likely been obliterated by the buried pipe routing, although a short hint may still remain at **32.74448 -109.80736**. Requiring a consistent and constant route slope limited by end point elevations strongly suggests that this portion of the canal route was either under the road or directly east of it.

From the distribution box, the original canal appears to continue down along the **highest elevations** of Deadman Mesa in its apparently original architecture. The latter totally free of any concrete, rebar, or headgates. The canal routing would seem to historically support an unnamed tank at **32.75259 -109.78980**, Upper Deadman Tank at **32.75862 -109.77036**, and to Lower Deadman Tank located at **32.77085 -109.75152**. The latter is presently dry and seems to be abandoned.

The prehistoric canal appears to have had two main branches. Both of which remain woefully underdocumented. The eastern branch remains unexplored due to difficult access. Lengths remain unknown as the branch destinations remain speculative and unproven. Nonetheless, the Deadman Canal system is obviously a major and central contributor to the entire **Bajada** canal system.

Here is a map of the Western Branch of the Deadman Canal complex...



The West Branch consistently travels along the **highest possible** Deadman Mesa elevations. It splits at **32.75041 -109.79583** to prehistorically source the East Branch and historically serve a cattle tank.

A significant West Branch feature is a **pinch point** that might also be serving as a **three way routing switch** at **32.76067 -109.78143**. At this point, the flat highest mesa top is only a meter wide and directly holds a half meter wide water channel. This strongly suggests the **only** possible canal routing in this area!

Movement of rocks would appear to easily perform switching to two or even three selected locations. The direct route continues northerly to the Lower Deadman Tank at **32.77052 -109.75154** tank and beyond. Hints of a **Discovery Park Canal** at **32.79415 -109.72946** might form a possible yet still unproven destination. There are significant cultural features in this immediate area, but canal evidence itself remains somewhat marginal and indistinct.

The Eastern switch route would appear to serve Upper Deadman tank found at **32.75863 -109.77041**. Although not verified, it would also appear possible at the pinch point to switch water westerly down canyon to the Porter Springs tank at **32.77050 -109.77784**. An enigmatic possible short **Longview Canal** wall appears at **32.78936 -109.75885** and could form a tentative destination.

The significance of the "highest route", "pinch point" and "multiple switching" unique engineering in the West Deadman Mesa area cannot be overstated!

Here is a map of the Eastern Branch of the Deadman Canal complex...



The Eastern Branch of the Deadman bajada canal remains unexplored and unproven owing to difficult access. Its presence and credibility is strongly suggested by [Acme Mapper](#), satellite images. It would appear to potentially be as major and as significant as Deadman West.

The canal apparently starts today at [32.75283 -109.78848](#) near a historically developed and adapted canal. It then continues to several extremely narrow mesa top pinch points at [32.75455 -109.78144](#) and [32.75541 -109.77976](#), and its last southern trace currently appears to be near [32.75768 -109.77414](#). In general, the canal often seems to follow the extreme and narrow northern edge of its mesa.

The destination still remains unknown. Another possibility is a field near Lower Deadman tank at [32.75857 -109.77039](#) Also possibly Western Branch fed.

A second possibility is that this could be a feeder to the TB West canal, possibly near [32.76087 -109.74495](#). There are also some short canal hints centered around [32.77078 -109.74260](#) that might demand a credible water source.

ATV or drone use would be helpful for the long and steep return hiking path.

Ownership of both canals are a mix of private land, **CNF** and **Arizona State lands**, starting with an initial elevation of 4600 feet and possibly ending with the West branch at 3000 feet and East branch at 3200 feet.

Slopes are estimated in the one to two percent range.

If the **Discovery Canal** link proves valid, the possible West Deadman length could approach 11 kilometers. Deadman West is presently limited to 2 kilometers or so. And remains largely underexplored.

This prehistoric **bajada canal** is located in Arizona's **Safford Basin** in the **Upper Gila Valley** and is believed to date through the 1350's. Access is usually quite difficult and can be reached via the rough Deadman Canyon 4WD track off lower Frye Creek or the poor trail routing southwardly from Lower Deadman Tank.

The study area is a good candidate for foot, possible ATV, or drone access.

Here are some noteworthy **Deadman Bajada Canal** features and locations...

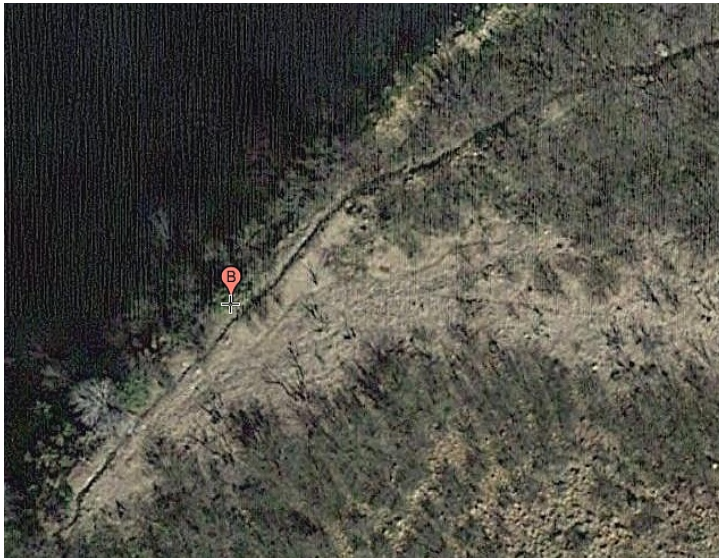
- 32.73706 -109.81399** Perennial Deadman mountain stream source.
- 32.73706 -109.81399** Historic concrete pipe delivery takein.
- 32.74113 -109.81098** Pipe believed to follow prehistoric canal route.
- 32.74330 -109.80872** Required slope suggests canal beside road.
- 32.74505 -109.80660** Pipe and canal appears to deviate from road.
- 32.74496 -109.80659** Upper historic headgate and distribution box.
- 32.75074 -109.80721** Broken transite pipe routes to Frye Creek
- 32.74639 -109.80380** No concrete, iron, or headgates north of here.
- 32.74832 -109.79895** Flowing canal routing appears to follow original.
- 32.75049 -109.79592** Presumed original fork of East and West canals.
- 32.75244 -109.78995** Historic tank still water fed.
- 32.75244 -109.78995** Presumed deviation of historic and East canals.
- 32.75467 -109.78119** Mesa extreme knife edging.
- 32.75581 -109.77901** More knife edging defines only possible route.
- 32.75861 -109.77029** Upper Deadman tank.
- 32.77078 -109.74260** Possible destination in unexplored canal segments
- 32.76167 -109.74425** Possible destination as **TB West Canal**
- 32.76080 -109.78133** Presumed "knife edge" three way switch.
- 32.77056 -109.77800** Porter Springs tank.
- 32.78936 -109.75885** Possible **Longview Canal** wall.
- 32.75954 -109.78208** Likely the only feasible canal route.
- 32.76280 -109.77511** West canal continues to Lower Deadman tank.
- 32.77139 -109.75161** Lower Deadman tank.
- 32.79343 -109.72822** Strongest evidence to date of **Discovery Canal**.
- 32.79740 -109.72541** Possible **Discovery Canal** destination fields.

Further Deadman Canal work might include...

- 1 — Verify original hanging route of pipeline overlay.
- 2 — Seek proof of pipeline overlay to prehistoric original.
- 3 — Determine if Porter Springs was a downcanyon possibility.
- 4 — Establish credibility of **Longview Canal** wall.
- 5 — Determine if Lower Deadman Tank has an underlying field.
- 6 — Attempt to increase credibility of **Discovery Park** Canal .
- 7 — Determine if **Deadman West** sources the **Discovery Park** Canal.
- 8 — Explore short canal hints north of Lower Deadman.
- 9 — Field verify **Deadman East** Canal, possibly with ATV's.
- 10 — Verify any relationship between **Deadman East** and **TB West** Canals.
- 11 — Significantly improve photography and annotation of canal complex.
- 12 — Do fly over drone and videotape survey.
- 13 — Mentor students and create field camps.

More Hanging Canal Resources: <http://www.tinaja.com/tinsamp1.shtml>

New Hanging Canal Discoveries: <http://www.tinaja.com/whtnu17.shtml> , etc...



DEADMAN3 - The Mesa top is extremely narrow along this Deadman West course. This "pinch pont" appears capable of a three-way switching that can route to Upper Deadman Tank, Lower Deadman tank, or (possibly) even downcanyon to Porter Springs. View is downward with north=up at [32.76073 -109.78137](#).

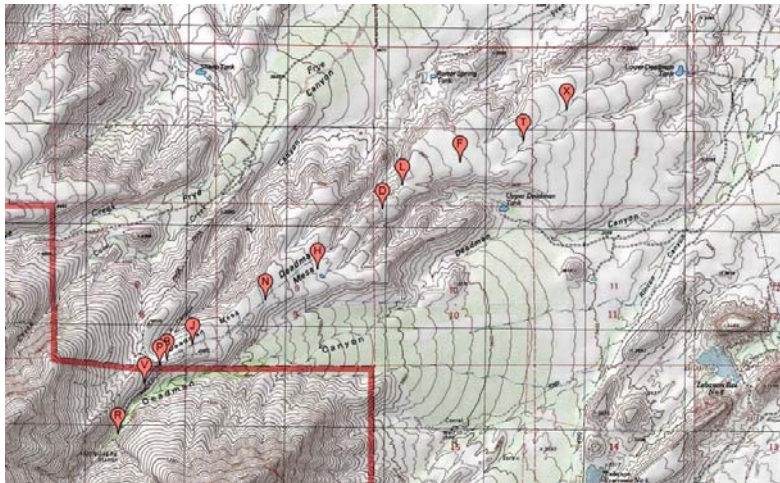


DEADMAN4 - An apparent pinch point on the Deadman East Canal "hung" on the very edge of a mesa top. The appears to be the only feasible canal routing in the area. View is downward with north=up at [32.75434 -109.78194](#).



DEADMAN5 - "Knife Edging" would seem apparent in this Google Earth 3D image. Purpose, efficiency, linearity and slope constancy are all consistent with a **Bajada Hanging Canal**, but this image still awaits field verification. The view is to the northeast at **32.75399 -109.78250**.

Here is a topographic map of the Deadman West Canal...



Here is a topographic map of the Deadman East Canal...



You can click through on the above images to directly reach [Acme Mapper](#) at a higher resolution.

A hanging canal directory can be found [here](#) and its sourcecode [here](#).

This field note is associated with directory [#21 DCM1 Main Deadman Canal](#) and [#68 DEC1 Deadman East Canal](#).

This document can be found [here](#) and its sourcecode [here](#)..