

BUILD Improved ASCII Encoder

by DON LANCASTER

Simplified circuit lets you convert virtually any surplus keyboard into the proper code to talk to a computer or the Radio-Electronics TV Typewriter

THE ORIGINAL RADIO-ELECTRONICS ASCII keyboard encoder (*Radio-Electronics*, April, 1973) was designed to convert the single-make contacts of the Low Cost Keyboard (*Radio-Electronics*, February, 1973) into the proper ASCII computer code for talking to either a computer or the TV Typewriter (*Radio-Electronics*, September 73). Here's a greatly improved version of the same circuit.

It's much smaller, uses far fewer parts, has true TTL compatible outputs, provides an optional "there's two keys down" output and is designed to exactly fit one end of the currently popular "keypunch" type of surplus keyboards. Costs are about the same as the original but no kits are sold. It works with any keyboard that has one isolated pair of spst contacts that are normally open per key. The contacts may be mechanical, reed

switches, contacts, or resistive elastomeric pads. For low impedance contacts, you need a single +5-volt supply. For resistive contacts up to 1000 ohms, you need a second +12-volt supply at low current.

In its present form, it will encode all the upper case alphabet, most punctuation, all the numbers, a spacebar, a carriage return, a shift key to shift from numbers to punctuation, and a control key for transparent or machine commands. Additional keys are easily added if needed. A slight modification of the pre-encoder matrix on the *Radio-Electronics* low-cost keyboard (February 1973) is needed to use the new unit.

More on ASCII

The standard computer code in use today is called ASCII, short for American Standard Code for Information Interchange.

The complete ASCII code is shown in Table 1. While there are 128 possible entries to the code, we are only interested in the first six columns of these. Columns 0 and 1 are the transparent or machine commands.

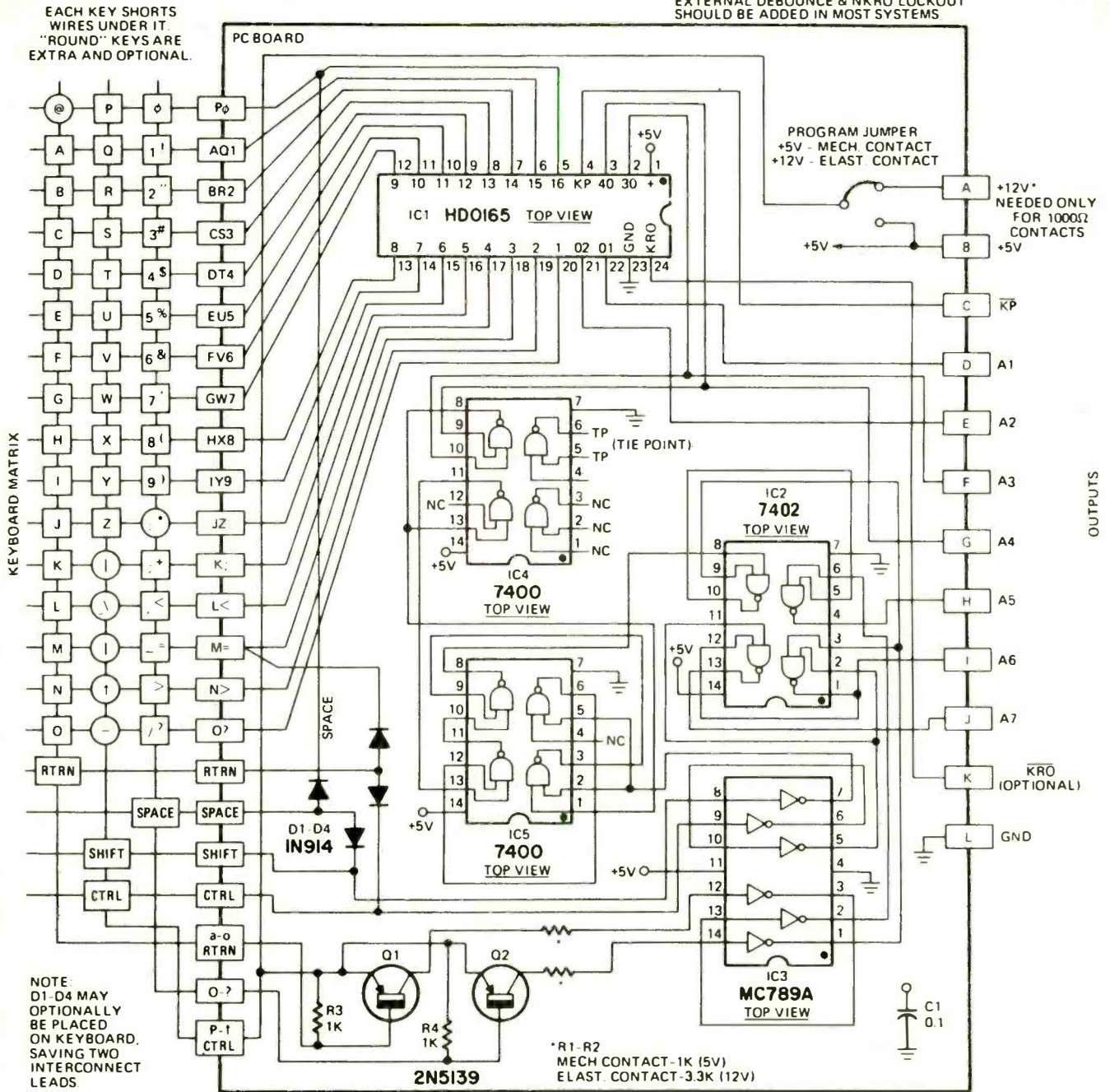
Things that don't end up in print or as part of a message, but instead return carriages, start and stop equipment, indicate beginnings and endings, and so on. Column 2 is the most popular punctuation, while column 3 is the numbers and more punctuation. In this encoder, we get from column 2 to column 3 by using a *shift* key. Thus, a capital "I" becomes a !, and so on. Finally Columns 4 and 5 are the alphabet and some lesser used punctuation.

We can get by with a basic assembly of 48 keys less a few if we're willing to do away with [./], ↑ and _____. With a Control or CTRL key, we can shift any column 2 or 4

TABLE I
THE INDUSTRY STANDARD ASCII COMPUTER CODE

Bits					Column	0	1	2	3	4	5	6	7	
b7	b6	b5	b4	b3	b2	b1	0	0	0	0	1	1	1	1
0	0	0	0	0	0	0	0	1	1	0	0	1	1	1
0	0	1	0	0	0	0	0	1	0	1	0	0	1	1
0	0	1	1	0	0	0	0	1	0	1	0	1	0	1
0	1	0	0	0	0	0	0	1	0	1	0	1	0	1
0	1	0	1	0	0	0	0	1	0	1	0	1	0	1
0	1	1	0	0	0	0	0	1	0	1	0	1	0	1
0	1	1	1	0	0	0	0	1	0	1	0	1	0	1
1	0	0	0	0	0	0	0	1	0	1	0	1	0	1
1	0	0	1	0	0	0	0	1	0	1	0	1	0	1
1	0	1	0	0	0	0	0	1	0	1	0	1	0	1
1	0	1	1	0	0	0	0	1	0	1	0	1	0	1
1	1	0	0	0	0	0	0	1	0	1	0	1	0	1
1	1	0	1	0	0	0	0	1	0	1	0	1	0	1
1	1	1	0	0	0	0	0	1	0	1	0	1	0	1
1	1	1	0	1	0	0	0	1	0	1	0	1	0	1
1	1	1	1	0	0	0	0	1	0	1	0	1	0	1
1	1	1	1	1	0	0	0	1	0	1	0	1	0	1
1	1	1	1	1	1	0	0	1	0	1	0	1	0	1
0	0	0	0	0	0	0	NUL	DLE	SP	@	P		p	
0	0	0	1	1	1	1	SOH	DC1	!	A	Q	a	q	
0	0	1	0	0	0	0	STX	DC2	"	B	R	b	r	
0	0	1	1	0	0	0	ETX	DC3	#	C	S	c	s	
0	1	0	0	0	0	0	EOT	DC4	\$	D	T	d	t	
0	1	0	1	0	0	0	ENQ	NAK	%	E	U	e	u	
0	1	1	0	0	0	0	ACK	SYN	&	F	V	f	v	
0	1	1	1	0	0	0	BEL	ETB	^	G	W	g	w	
1	0	0	0	0	0	0	BS	CAN	(H	X	h	x	
1	0	0	1	0	0	0	HT	EM)	I	Y	i	y	
1	0	1	0	0	0	0	LF	SUB	*	J	Z	j	z	
1	0	1	1	0	0	0	VT	ESC	+	K	[k	{	
1	1	0	0	0	0	0	FF	FS	,	L	\	l	/	
1	1	0	1	0	0	0	CR	GS	-	M]	m	}	
1	1	1	0	0	0	0	SO	RS	>	N	^	n	~	
1	1	1	1	0	0	0	SI	US	/	O	_	o	DEL	

NOTE:
EXTERNAL DEBOUNCE & NKRO LOCKOUT
SHOULD BE ADDED IN MOST SYSTEMS.



NOTE:
D1, D4 MAY
OPTIONALLY
BE PLACED
ON KEYBOARD.
SAVING TWO
INTERCONNECT
LEADS

*R1, R2
MECH CONTACT-1K (5V)
ELAST. CONTACT-3.3K (12V)

1PARTS LIST

- C1—0.1- μ F disc ceramic, Mount //at.
- D1, D2, D3, D4—1N914 or equivalent silicon computer diode
- IC1—HD0165 Encoder (Harris)
- IC2—7402 TTL Quad NOR gate
- IC3—MC789AP Hex Inverter, RTL, do not substitute
- IC4, IC5—7400 TTL Quad NAND gate
- Q1, Q2—2N5139, silicon pnp
- R1, R2—Varies with keyboard, 1000 ohms for mechanical contacts and +5 supply; 3300 ohms for elastomeric high resistance contacts and +12 supply.
- R3, R4—1000 ohms. 1/4-watt carbon

MISC. PC Board, Solder; No.24 Soldereeze wire, 20 feet for keyboard wiring, sleeving, No.24 solid wire jumpers.

NOTE: The following is available from Southwest Technical Products, 219 West Rhapsody, San Antonio, Texas, 78216

PC Board, etched and drilled: \$5.75.

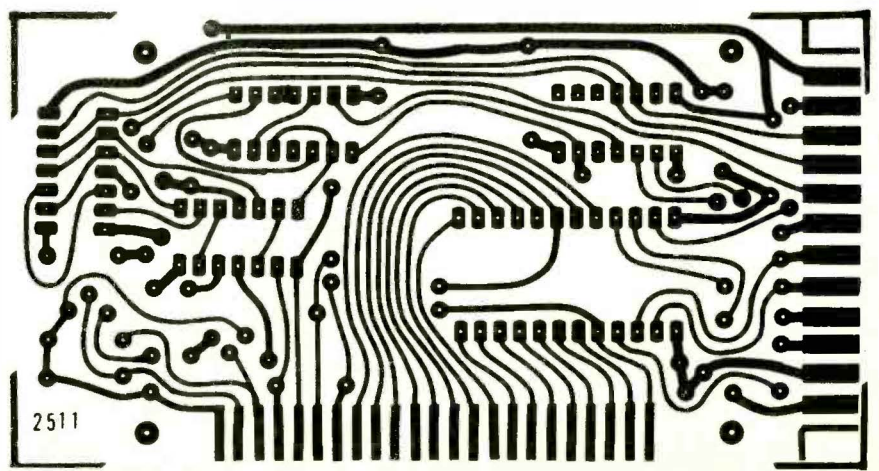


FIG. 1—ASCII ENCODER CIRCUIT (top) is easy to build. FULL SIZE FOIL PATTERN (above) is for the circuit board. PARTS LAYOUT (right) shows where to mount the components on the circuit board.

code into a column 0 code, and any column 3 or 5 code into a column 1 code. Thus, we need no new keys for the control commands, unless we are really going to use that command often. CARRIAGE RETURN is often used, so, it's handy to have a special key that *simultaneously* gives us a CONTROL and a M command. Similarly, we can get a spacebar by simultaneously giving a SHIFT and a 0 command. Other special functions (DELETE, ESCAPE, AIT MODE, etc. . . .) are easily added in the same way.

To decide when a code is sent, a key-pressed command is given when a key is

pressed, telling things on the other end that something new is happening. We *do NOT deliver* a keypressed command for the shift or control key, for they are always used in conjunction with another key. And, in our circuit, we get a free "there's two keys pressed!" output that can be used to tell whatever is on the other end that the typist is running too fast or just made a mistake and please ignore what just arrived. One final, and slightly messy detail involves the > = < and ? keys. Normally, we like to type commas, dashes, periods, and slashes *without* shifting, and save the question,

equals, greater than, and less than for *shifted* commands. This is clearly backwards from the standard code. So if we are going to go along with the standard code (often we are forced to because of the keytops on the keyboard we're going to use), we have to arrange the shift key so that it operates *backwards* on these four keys. All this takes are two 21 ζ IC's, but this is a complex and painful little detail to resolve.

The output of the code consists of seven bits in *parallel*, or all-at-once form. An eighth *parity* bit can optionally be added for error detection, or the seventh bit can optionally be dropped to get the 10-bit code that has only alphanumerics to run a character generator. Should we want to talk to a computer or a phone line, we have to convert this code to a *serial* form, easily done with either the circuit shown in the original article or with a new MOS terminal transmitter/receiver chip. Depending on the type of keyboard and the debouncing in the rest of the system, we may have to add a contact conditioning and debouncing system as well.

About the new circuit

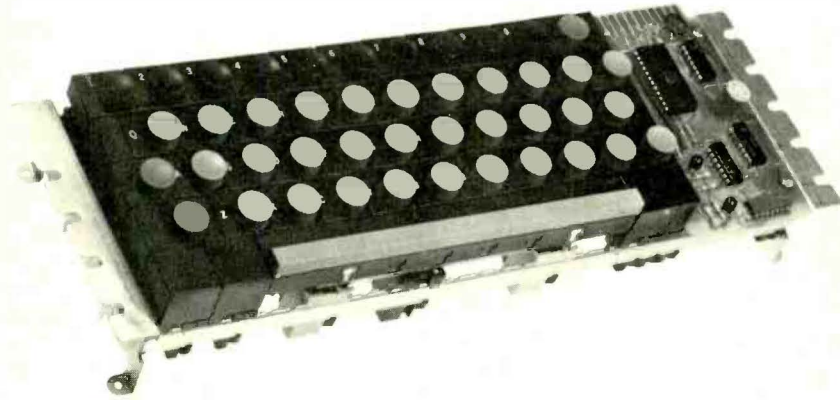
The new circuit is shown in Fig. 1. Except for IC1 (presently around \$7.50), all the remaining parts are nickel and dime stuff, and there are only 19 components in all. Just like the code of Table 1, we can split the problem into two parts, for the lower four bits couldn't care less what the upper three are doing, so long as everything ends up right. Thus a lower four bits 1101 code could be a carriage return, a group separator (a very rare machine command), a dash or minus, an equals, a M, or a large unbracket. IC1 singlehandedly takes care of the lower four bits for us. It has sixteen input lines and four output lines. If you make any *one* (only one!) input line positive, it gives the binary equivalent to that code. Thus the third line generates a 0011, the eighth line a 1000, and so on.

The inputs are RTL style and simply need an impedance path to +5 or +12 to serve as an input command. Whatever *else* the input current flows through on the way to set up the upper three bits is of no concern to IC1, so long as the current gets there when it is needed. IC1 also generates a keypressed output that's high if all the inputs are low and goes low if any key is pressed. It also produces an optional output that goes low if two keys or more are simultaneously pressed. This is called a NKRO output, short for N-key-rollover.

It only takes about +3.5 volts to turn on an IC1 input. Since the input is current operated, we can either get our current from a low impedance (mechanical or reed) contact and a +5 supply, or from a higher impedance (elastomeric or foam) contact and a +12 supply. Around two milliamperes are needed, but it can handle much more than that safely. Thus, we can use virtually any kind of keyboard contact simply by picking one optional low current supply voltage.

So much for the lower four bits. The upper three bits are generated by responding to *what* the IC1 input current is routed through on the way down from the positive supply. If it goes through nothing, we set up P-Z. If it goes through Q1, we set up A-O, and if it goes through Q2, we set up zero through 9 and the related punctuation. The

(continued on page 92)



TYPICAL KEYBOARD WITH ENCODER. The small encoder board is mounted at the right end of the keyboard.

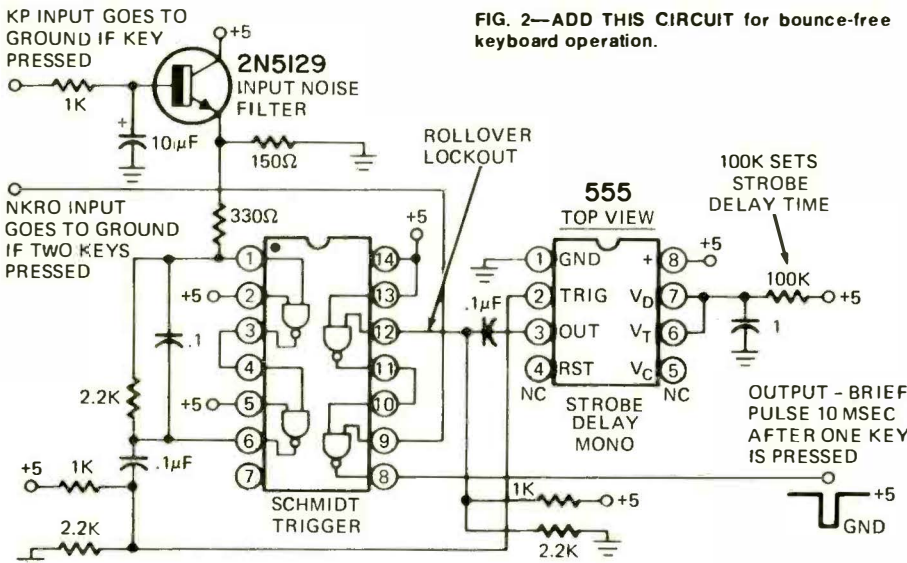
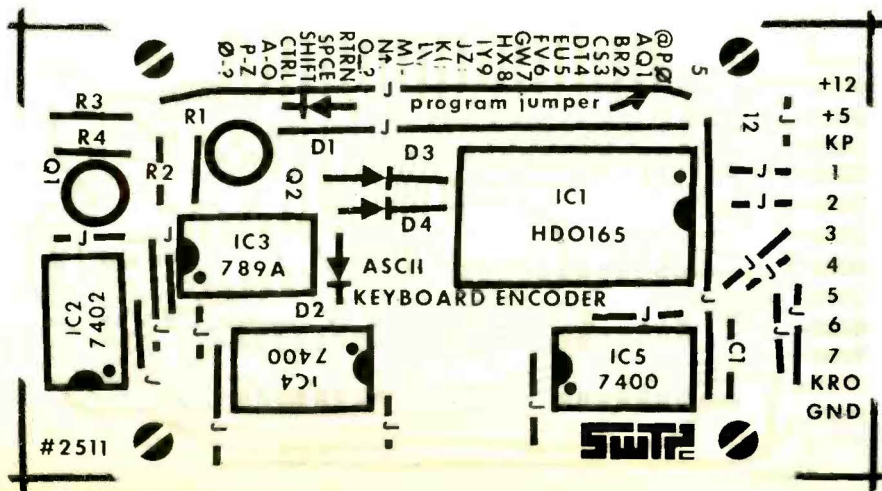


FIG. 2—ADD THIS CIRCUIT for bounce-free keyboard operation.



DISCOUNT TEST EQUIPMENT SPECIALISTS



SENCORE

Leader

COMPLETE LINE OF
ELECTRONIC SUPPLIES
ICC/Mullard & Raytheon Tubes
Telematic Test Rigs
TV Tuner Subber

FREE CATALOG

FORDHAM

Radio Supply Co., Inc.
558 Morris Ave., Bronx, N.Y. 10451
Tel: (212) 585-0330

Circle 66 on reader service card

IMPROVED ASCII ENCODER

(continued from page 61)

sensing is translated down to ground by IC3 and acted on by IC2 to get the proper three bit code. For instance, with no current through Q1 or Q2, the output code 101-XXXX is sent, corresponding to a character P through Z. Current through either other transistor sets up the numbers or lower alphabet code. And this gives us our basic 48 key encoding scheme.

Now, we add some refinements. The shift key acts on IC2 to change from punctuation to numbers or backwards. If a code from 0000 through 1011 is sent, this is recognized by IC5 as a number, a colon, or a semicolon. IC5 then tells IC4 to leave the shift command the way it was, and a *unshifted* key gets you a number, and a *shifted* key gets you the equivalent punctuation. On the other hand, if codes 1100 through 1111 are sent. IC5 detects this, and through the exclusive-or gate in IC4, compliments the shift line. Now, the shift key works *backwards*, putting the four problem punctuation keys back the way they belong. This is admittedly a bootstraps operation, but the time for the output to tell the input to shift is only a few nanoseconds, an utterly negligible time compared to most contact conditioning and compliment-the-shift-if-12-or-greater circuit *only* affects the number keys. Any alphabet or punctuation key in columns IV or V are *not* affected by this circuit since Q2 is not sensing a "numbers" key.

Finally, the control key forces outputs 6

and 7 to ground regardless of anything else, automatically shifting from an alphanumeric command to a machine command. The spacebar is diode encoded to simultaneously provide a shift and a 0, or a "capital O", while the carriage return key uses two diodes to simultaneously give you a "control" and a "M" command. Other special keys are easily added, often by using two more diodes per key. If you need a DEL or delete key, the simplest way to do this is to break output line 6 with a SPDT key and route it to +5. The normal output of the encoder is 101-1111 when no key is in use. This changes it to 111-1111 or DEL. If you must have the lower case alphabet (make sure the other end of the system can handle or recognize it), you can leave the DEL key down to generate it.

Building it

A PC board is shown along with a parts list and notes on kit availability. We cannot tell you, now, what keyboards are available. Check the ads in the back of this issue for a guide. Before construction, you have to decide whether you are going to use mechanical contacts or resistive ones and place the program jumper accordingly, +5 for mechanical contacts or +12 for elastomeric ones. A 12-volt battery may also be used, as no input current is drawn unless a key is pressed, or you can tack a 6-volt battery on top of the +5-volt line for 11 volts. Resistors R1 and R2 also have to be changed, 1K for the +5-volt supply, or 3.3K for the +12-volt supply. If the encoder is to be used on a keypunch style keyboard, it easily mounts on one end of the unit by using four spacer blocks. A slight amount of filing may be

(continued on page 94)

INTERNATIONAL Frequency meter FM-2400CH

- Tests Predetermined Frequencies 25 to 1000 MHz
- Extended Range Covers 950 MHz Band
- Pin Diode Attenuator for Full Range Coverage as Signal Generator
- Measures FM Deviation

The FM-2400CH provides an accurate frequency standard for testing and adjustment of mobile transmitters and receivers at predetermined frequencies.

The FM-2400CH with its extended range covers 25 to 1000 MHz. The frequencies can be those of the radio frequency channels of operation and/or the intermediate frequencies of the receiver between 5 MHz and 40 MHz.

Frequency Stability: $\pm .0005\%$ from $+50^\circ$ to $+104^\circ\text{F}$.

Frequency stability with built-in thermometer and temperature corrected charts: $\pm .00025\%$ from $+25^\circ$ to $+125^\circ$ (.000125% special 450 MHz crystals available).

Self-contained in small portable case. Complete solid state circuitry. Rechargeable batteries.

WRITE FOR CATALOG!



FM-2400CH (meter only).....	\$595.00
RF crystals (with temperature correction).....	24.00 ea.
RF crystals (less temperature correction).....	18.00 ea.
IF crystals.....	catalog price

INTERNATIONAL
CRYSTAL MFG. CO., INC.
10 NO. LEE • OKLA. CITY, OKLA. 73102

NOW A PROFESSIONAL BURGLAR-FIRE ALARM SYSTEM YOU CAN INSTALL YOURSELF.



ONLY 129.95

Save hundreds of dollars in alarm installation and monthly service charges. The EICO SS-500 "install-it-yourself" burglar-fire alarm system offers you the kind of professional protection you have been looking for, at a price you can afford. The SS-500 has been designed on the EICO "Expandability Concept" that enables you to "add-on" protection to meet your own special needs. Before you purchase any security system, we suggest you read the EICO Security Handbook and see how easy EICO makes it to "Do-it-Yourself."

FREE EICO CATALOG/SPECIAL OFFER!

Security handbook (Reg. \$2.95) only \$1.50 with this ad. Includes a catalog on EICO Security Systems, Test Instruments, Stereo, Hobby Kits and name of nearest distributor. For catalog only, check reader service card or send 25¢ for first class mail service.

EICO, 283 Malta Street, Brooklyn, N.Y. 11207



Circle 69 on reader service cards



birth defects
are forever.
unless you help.

MARCH OF DIMES

KEYBOARD ENCODER

(continued from page 92)

necessary on these blocks, depending on your soldering on the circuit board to get things to lie flat. The bypass capacitor should be mounted *component* side, but with slightly long leads and bent flat. Otherwise interference between C1 and the metal case or rails holding the keyboard in your system may result.

There are 23 input leads. These are directly wired to the keys following the wiring matrix of figure one. (If you're using the Radio-Electronics Low-Cost Keyboard, rewire the jumper matrix to suit.) If you have to run through a connector or otherwise want to minimize the interconnect leads, the diodes D1 through D4 can be placed on the keyboard end, reducing you to 21 connections. Normally you mount the encoder integrally with your keyboard and this doesn't matter.

Note that whatever keyboard you use, the keytops must be ASCII ones. This means that the "capital 2" has to be a #, the capital colon a *, the capital semicolon a dash or minus, and so on. Otherwise, you have to remark the keyboards.

Using a keypunch keyboard

These are easily recognized by their bright blue keys and are now available from several surplus sources. More can possibly be expected since keypunch equipment is more or less headed to obsolescence. An unmodified one of these has the keys and keypairings all wrong, since they originally

TEST RIG FOR TUBE & SOLID STATE

THE COMBO RIG
MODEL CJ-175

\$89.95
less picture tube



- ELIMINATES HAULING CABINET & TUBE
- SPEEDS TROUBLE SHOOTING
- SERVICES TUBE & SOLID STATE

TELEMATIC TEST RIG CJ-175

CONSISTS OF:

- ★ Compact metal case
- ★ Universal Yoke
- ★ Convergence Yoke
- ★ Blue Lateral Magnet
- ★ Solid State Transverter
- ★ 4' Anode Extension
- ★ 4' 90 degree CRT Extension
- ★ 4' Yoke Extension
- ★ Convergence Load
- ★ 4 Yoke adaptors for Solid State

Telematic

Write us for free subscription of current cross-reference charts.
2245 Pitkin Avenue, Brooklyn, N.Y. 11207

were EBCDIC coded, a non-standard and older code. Fortunately the callouts go where you can't reach them with a finger, and attractive stick-ons are easy to do, (see parts lists) as are instant transfer letters, or white ink from the stationery store.

Various solvents (lacquer thinner, etc.) easily remove the old ink, or it may be carefully scraped off with an Xacto knife or a razor blade. Don't soak the keys in solvent as it may attack the plastic. Keyboards available from some sources are completely rebuilt for ASCII use. If you are doing your own instead, rearrange the parts so you have a rectangular block of keys with the black keys on top and the blue ones in the middle. Again, if you are rebuilding your own, you probably will end up short by at least two or three blue keys. These may be repainted as needed. ASCII modified keyboards come with everything the right color. Extra mounting blocks on one end support the encoder. The encoder may be mounted above or below the rails, although the lower position is much easier to wire. Output may be directly soldered, or connected with a standard 12-pin PC edge connector.

One way to simplify the wiring with this type of keyboard is to use *solderable* magnet wire—stuff that you can solder right through the insulation. Beldsol and Soldereze are two types. This way, you loop the wire from terminal to terminal and then solder it in place without stripping. Stripping or at least pretinning is still recommended at the PC board end. It takes extra heat to solder through the insulation, but don't use so big an iron or gun that you melt the key assemblies or hurt the PC board. Heat the joint

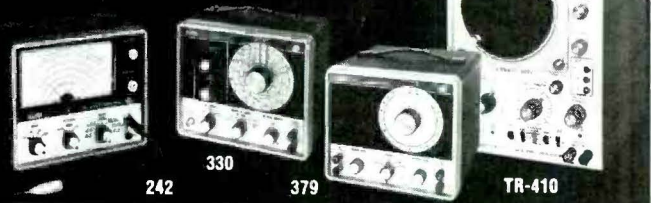
(turn page)

For
faster
service

USE
ZIP
CODE

on
all
mail

4 Money-saving reasons to buy EICO's Solid State Test Equipment.



EICO 242 FET-TVOM. Peak-to-peak measurements of AC volts and milliamps. 6½" meter. 7 non-skip ranges. High input impedance. Low 1 volt scale. DC/AC Multi-Probe. AC or battery operated. Kit \$79.95, Wired \$109.95.

EICO 330 RF Signal Generator. 5 bands cover a range from 100 kHz to 54 MHz. Calibrated modulation adjustment control. 400 Hz audio output. Provision for modulating RF with internal or external signal source. Kit \$64.95, Wired \$99.95.

EICO 379 Sine/Square Wave Generator. Simultaneous sine and square wave outputs. Covers 20 Hz to MHz in five ranges. Low distortion sultzer feedback circuit. Square wave rise time better than 0.1 microseconds. Kit \$74.95, Wired \$109.95.

EICO TR-410 Triggered Sweep Scope. 100% solid state. DC to 10MHz bandwidth. Sweep synchronized gate output. Z-Axis input. Use as vectorscope for color TV servicing. One probe for direct and 10:1 measurements. Wired \$429.95.

FREE 32 PAGE EICO CATALOG

For latest catalog on Eico Solid State Test Equipment, Automotive and Hobby Electronics, Burglar-Fire Alarm Systems, Stereo, and name of nearest EICO Distributor, check reader service card or send 25¢ for fast first class mail service.

EICO, 283 Malta Street, Brooklyn, N.Y. 11207



Circle 69 on reader service card

FREE catalog



over
1000
unique tools,
handy kits,
precision
instruments,
technical
supplies.

Our 21st year of service to the World's finest craftsmen and technicians.

National Camera
2000 West Union Ave., Dept. G88
Englewood, Colorado, 80110

Send a FREE copy of the nc Flasher

name

address

city

state

zip

National Camera
2000 West Union Ave., Dept. G88
Englewood, Colorado, 80110

Circle 71 on reader service cards

Assemble this digital clock and calendar in just one evening...get continuous readout of hour, minute and second, plus month and day.

This new Digital Concepts electronic digital clock and calendar indicates the hours, minutes and seconds or the month and the day... or alternates between time and date at 10 second intervals. Glowing orange digital readout (a continuous character .55 inch high) is visible from almost any viewing angle, no matter how light or dark the room.

Operation is totally silent, with accuracy to within seconds a month; life expectancy is an incredible 100,000 hours



CHOICE OF DISPLAY MODES

You can decide to display time only, date only, or a continuous 10-second cycle in which time alternates with date. You can operate on a 12-hour or 24-hour international time sequence. And you can change all display modes instantly—any time you wish—by flicking simple controls.

BEAUTIFUL, AND BEAUTIFULLY EASY TO ASSEMBLE

The contemporary hand rubbed oiled walnut cabinet is ideal for home, office or place of business. And a very memorable gift. All components of the kit mount on two interlocking printed circuit boards, for easy assembly in one evening, using only a soldering iron and a pair of diagonal cutters. The only wire in the kit is the line cord. Accuracy is assured by one MOS/LSI integrated circuit "chip" and top quality electronic components throughout.

The Digital clock and calendar is also available factory assembled.

ORDER NOW FOR IMMEDIATE DELIVERY

Send this coupon with your check or money order for fast delivery anywhere in the world. Money back guarantee if not fully satisfied

digital concepts

249 Route 46, Saddle Brook, New Jersey 07662

Enclosed please find my check or money order for \$ _____ or charge my Mastercharge account number _____ expiration date _____ to cover the following order:

- _____ kit(s) of electronics only, Model CK-100 @ \$68.00 each
- _____ cabinet(s), with face and mounting hardware Model C-31 @ \$18.00 each
- _____ factory assembled calendar clock(s) Model EC-102 @ \$108.00 each

Add \$3.00 to cover costs of postage and handling

Name _____

Address _____

City _____

State _____ Zip _____

Circle 72 on reader service card

Save money

ZENITH	
221-45 Color IC	2 for \$4.95
212-109 Voltage Trip	\$4.95
212-136 Voltage Trip	\$4.95
212-72-Cov. Bd. Diode	2 for \$1.00

PHONO EQUIP.	
SONOTONE-8-T	2 for \$3.95
BSR-TC8S	2 for \$3.95
VARCO CN-72	2 for \$3.95

SPEAKERS	
3 1/2" Sq.	\$.69
4" Sq.	\$.79
2x6"	\$.99
4x6"	\$1.29
5x7"	\$1.99
6x9"	\$2.59
6" Round	\$1.79
8" Round	\$2.59

CONDENSERS (LIMITED)	
.001 Mfd.-1 KV	20 for \$1.00
.0039 Mfd. 1 KV	20 for \$1.00
.0068 Mfd. 1.2 KV	20 for \$1.00
.056 Mfd. 600 Volts	20 for \$1.00
.047 Mfd. 1 KV	20 for \$1.00
.01 Mfd. 400 Volts	25 for \$1.00
100 Asst'd Mica Cond.	\$1.19
150 Mfd. 150V-50Mfd.-50V	3 for \$1.00
100 Mfd.-150 Volts	6 for \$1.19

DIODES—SEMI-CONDUCTORS	
25-2.5 Amp.-100 PIV (I.R.)	\$4.95
6500 PIV Focus Rectifiers	4 for \$2.00
13.5 KV Focus Rect.	5 for \$3.00
Color Boost Rect.	5 for \$2.00
1N34A diodes	25 for \$2.00
3.59 Mhz. Color Crystals (SPEC.)	.3 for \$1.98

CONTROLS—RESISTORS	
20 Asst'd MALLORY CONTROLS	\$2.00
20 Asst'd. W.W. Sizes & Watt.	20 for \$1.39
53 Meg. IRC HV Res.	4 for \$2.00
66 Meg. IRC HV Res. (SPEC)	4 for \$2.00

5-40 KV HV Anode Leads	\$1.00
10-B/W Anode Leads	\$1.00
10 AC Interlocks-Polarized	\$1.00
Color CRT Boost. 90%	\$4.59
Color CRT Boost. 70%	\$4.49
70% Conv. Assembly	\$1.79
25 Asst'd Term. Strips	\$1.00
CRT Harness Color 23" & 25" Sets	5 for \$2.00
DELAY LINES	2 for \$1.19
50 Assorted Fuses (Boxed)	\$2.00
COAX "F" Connectors	6 for \$1.19
Blue Lat. Mag./Purity Rings	2 for \$2.98
10 Asst'd Align. Tools	\$1.98
AC-Cube Taps-3 Outlets	5 for \$1.00
Hi-Gain 2 Set Coupler	\$1.89
Hi-Gain 4 Set Coupler	\$2.79

TUNERS NEW WITH TUBES	
G.I. Parallel	\$3.95
Sylv. Trans. 54-29331-3	\$6.95
Sylv. Trans. 54-35055-2	\$6.95
G.E. Parallel-ET38X318	\$6.95
G.E. Trans. EP86X15	\$6.95
Philco Series - 5GJ7-3HQ5	\$4.95

COLOR YOKES	
MAGNAVOX 361340-Equiv. Y-133	\$4.00
DY-95AC—Y-109	\$6.95
Silvertone 80-56-4G	\$4.95
Motorola—(Qusar)-24D68592B01	\$5.95

MINIMUM ORDER \$15.00
SEND FOR FREE CATALOG
TUBES UP TO 80% OFF

SEND CHECK OR
MONEY ORDER

TV TECH SPECIALS

P.O. Box 603
Kings Park, L.I., N.Y. 11754

KEYBOARD ENCODER

(continued from page 95)

first. After the insulation smokes, add a *minimum* amount of solder.

Testing the encoder

The obvious test is an acid test—connect it to the TV Typewriter or a terminal and see if it sends the right letters. A way that ties up less fancy equipment is to use a batch of IC driveable test lamps or LED's to *simultaneously* monitor all the outputs.

If some stickiness or reluctance is experienced with the spacebar and carriage return keys, raise the supply voltage slightly or replace D1 and D2 (the diodes that go to IC1) with metal barrier low-threshold diodes such as a MBD101 or something else with a 0.3 volt forward drop or less at 6-mA current. Of several IC1's tested, operation was satisfactory down to 4.7 volts. *Maximum* permissible voltage applied to the +5 terminal is 6.8 volts. A tightly regulated 5.1 or 5.2-volt supply should work with practically all units.

As with any keyboard system, some form of debouncing and noise elimination is *essential*. Normally, as in the TV typewriter, this is provided internally. If not, one possible circuit is shown in Fig. 2 that handles most any keyboard. An optional parity generator and parallel to serial converter were shown in the original article. These may be used as add-ons, or newer MOS asynchronous receiver-transmitter integrated circuits can be used for the same task. If enough readers need this sort of thing, we'll work up a project on it. R-E

APPLIANCE CLINIC

(continued from page 26)

pected switch, etc. and apply power. If the unit starts to heat, run, etc., turn it off, and replace that thermostat or switch.

In the plastic-cased thermostats, switches, etc., check the terminals. They should be clean, and tight in the body of the unit. In quite a few cases, the switch contacts can overheat, cause the body of the switch to char, and make the terminal come loose! This is a dandy cause of *intermittent* operation of the appliance. It will work perfectly one time, then refuse to go at all the next. Wiggle wiring, and check terminals, etc. Something is loose, not making good tight contact.

Careful attention to small details can help you find and fix some otherwise puzzling problems. Check everything! R-E

Give till it helps.

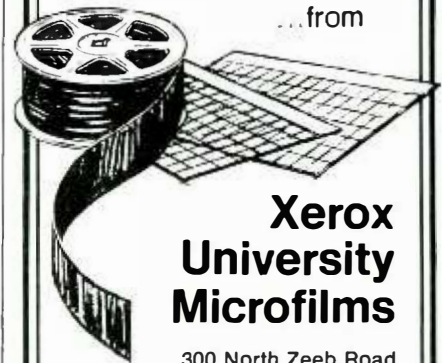
The American Red Cross. The Good Neighbor.

A Public Service of This Magazine & The Advertising Council



This Publication is Available in MICROFORM

...from



Xerox University Microfilms

300 North Zeeb Road
Ann Arbor, Michigan 48106

Xerox University Microfilms

35 Mobile Drive
Toronto, Ontario,
Canada M4A 1H6

University Microfilms Limited

St. John's Road,
Tyler's Green, Penn.,
Buckinghamshire, England

PLEASE WRITE FOR
COMPLETE INFORMATION

TOOL KITS

FIELD ENGINEER TOOL KIT JTK-17



Includes more than 100 tools!

Write for brochure

More than 100 fine tools used for servicing in the field. Used on communications equipment, business machines, computers, all kinds of electronic systems. All tools and VOM tester are furnished in deluxe attache case.

FIELD ENGINEER ATTACHE CASES



Five styles available

Pockets for 60 tools. Solid wood frame. Scuff-proof Mar-velon cover, all brass hardware. Compartments in base for spare parts and a test meter. Dimensions: 18 x 13 x 4-1/2". Write for catalog.

Free Catalog

ELECTRONIC ASSEMBLY TOOLS

Lists more than 1700 items—pliers, tweezers, wire strippers, vacuum systems, relay tools, optical equipment, tool kits and cases.

JENBEN TOOLS AND ALLOYS
417 N. 44TH STREET, PHOENIX, ARIZONA 85016

Circle 75 on reader service card