

Some Jernigan Canal Field Notes

Don Lancaster and **Dr. James Neely**

Synergetics, Box 809, Thatcher, AZ 85552
copyright c2017 pub 6/17 All rights reserved

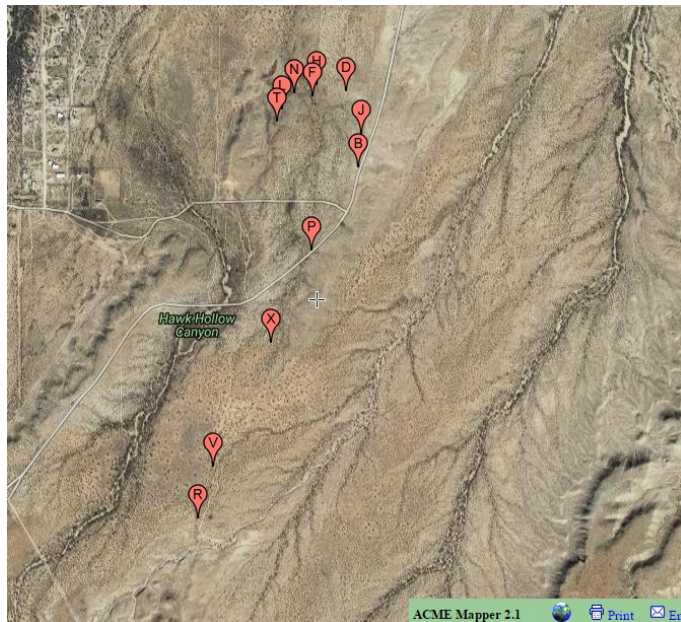
<http://www.tinaja.com>

don@tinaja.com and neelyja@utexas.edu

(928) 428-4073 and (575) 686-0098

The Jernigan **Prehistoric Hanging Bajada Canal** is a western branch of the **Mud Springs Canal**. Jernigan is somewhat over 2 kilometers long and is primarily northward oriented. While only portions have been mapped, its hallmarks include exceptionally well defined end use fields, a related occupancy structure, four "U" turns", area artifacts, a counterflow example, and a short but steep French Drain segment.

There is also a possible aquaduct in the area, but this could alternately be a historic dam-like structure. Ownership is primarily on **AZ State Lands**, and the canal is directly sourced by the **Mud Springs Canal**. Elevations begin at 3000 feet and the average canal slope approximates 0.8 percent.



Access is primarily off Layton Road, Grandma Lane, and a pair of 4WD tracks. Here are some noteworthy Jernigan Canal features and locations...

- 32.82744 -109.82008** During a recent bloom, "dead flowers" clearly marked the canal routings in this area.
- 32.82763 -109.81954** Start of Jernigan Canal splits northward.
- 32.82763 -109.81954** "Small rocks" may partially define headgate.
- 32.82949 -109.81891** Reasonably traced area. Portions may split.
- 32.83387 -109.81647** Unknown routing, despite numerous trips.
- 32.83768 -109.81460** Vague routing seems barely credible.
- 32.83913 -109.81546** Enigmatic aquaduct or historic structure.
- 32.84013 -109.81275** Well defined area immediately adjacent to Layton Road and amazingly close and rather similarly elevated to Mud Springs Canal.
- 32.84281 -109.81329** Unknown routing, despite numerous trips.
- 32.84305 -109.81454** First of four "U-turns" to optimize terrain. Canal resumes easy tracibility.
- 32.84313 -109.81451** Two medium sized Mesquite trees mid channel.
- 32.84264 -109.81472** Second "U-Turn" counterflows wash crossing.
- 2.84275 -109.81547** Third "U-Turn" works its way around mesa edge.
- 32.84216 -109.81597** Significant hanging portion is eminently viewable.
- 32.84173 -109.81619** French Drain cascade is short but rather steep.
- 32.84173 -109.81619** Final "U-turn" delivers to destination fields.

Further Jernigan Canal work might include...

- 1** — Resolve missing portions from **32.83069 -109.81815** to **32.83716 -109.81473**.
- 2** — Resolve missing portions from **32.84131 -109.81263** to **32.83716 -109.81473**..
- 3** — Integrate present canal studies with previous resources.
- 4** — Drone fly and videotape the entire route.
- 5** — Further research the headgate stones.
- 6** — Improve exact GPS locations.
- 7** — Provide additional photography.
- 8** — Better determine nature of **32.83913 -109.81546** "aqueduct".
- 9** — Continue use of awareness tours.



JERN1 – Composite view shows projected destination fields in the foreground, a significant hanging canal portion mid image, and Webster Hill in the background. A short but steep French Drain is off-image to the right. This canal dramatically "U-turn" reverses itself four times to optimize terrain following. A "counterflow" segment is used to cross a wash. The view is to the east at **32.84234 -109.81704** .